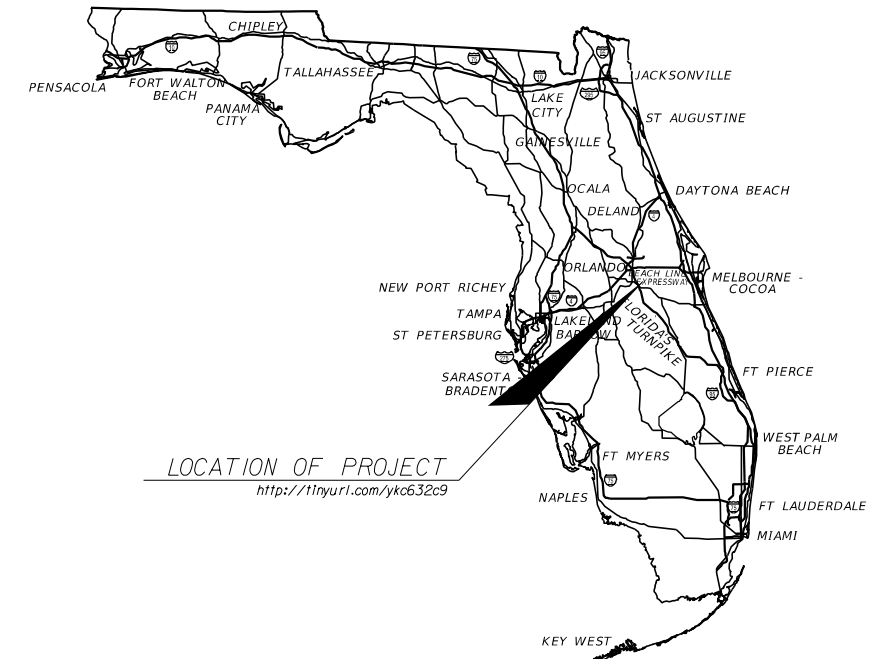




BOARD OF COUNTY COMMISSIONERS
OSCEOLA COUNTY, FLORIDA
ENGINEERING DEPARTMENT
 INTELLIGENT TRANSPORTATION SYSTEMS
 PLANS FOR
 COUNTY CONTRACT NO. PS-22-13174-DG
 JACK BRACK ROAD WIDENING
 FROM NARCOOSSEE ROAD TO ABSHER ROAD



CONTRACT PLANS COMPONENTS

- ROADWAY
- SIGNING AND PAVEMENT MARKING
- SIGNALIZATION
- LIGHTING
- INTELLIGENT TRANSPORTATION SYSTEMS

INDEX OF ITS PLANS

SHEET NO.	SHEET DESCRIPTION
IT-1	KEY SHEET
IT-2	SIGNATURE SHEET
IT-3 - IT-4	TABULATION OF QUANTITIES
IT-5	GENERAL NOTES
IT-6 - IT-15	INTERCONNECT PLAN
IT-16 - IT-17	SPLICING DIAGRAMS

GOVERNING STANDARD PLANS:

Florida Department of Transportation, FY 2024-25 Standard Plans for Road and Bridge Construction and applicable Interim Revisions (IRs).

Standard Plans for Road Construction and associated IRs are available at the following website: <http://www.fdot.gov/design/standardplans>

GOVERNING STANDARD SPECIFICATIONS:

Florida Department of Transportation, FY 2024-25 Standard Specifications for Road and Bridge Construction at the following website: <http://www.fdot.gov/programmanagement/Implemented/SpecBooks>

Osceola County Board of County Commissioners Road Construction Specifications at the following website: <http://tinyurl.com/yc2mzhpp>

BOARD OF COUNTY COMMISSIONERS

- | | |
|-------------------|------------|
| PEGGY CHOUDHRY | DISTRICT 1 |
| VIVIANA JANER | DISTRICT 2 |
| BRANDON ARRINGTON | DISTRICT 3 |
| CHERYL GRIEB | DISTRICT 4 |
| RICKY BOOTH | DISTRICT 5 |

COUNTY ADMINISTRATION

DON FISHER, COUNTY MANAGER

PUBLIC WORKS DEPARTMENT

MEHUL PAREKH, P.E., PUBLIC WORKS DIRECTOR
 NICHOLAS HARTLEY, P.E., ASSISTANT TRANSPORTATION & TRANSIT DIRECTOR

ITS PLANS
ENGINEER OF RECORD:

ALEX HINKLE, P.E.
 P.E. LICENSE NUMBER 82354
 PROTEAN DESIGN GROUP
 100 EAST PINE STREET, SUITE 600
 ORLANDO, FL 32801
 (407) 246-0044
 VENDOR NO.: F593216593003

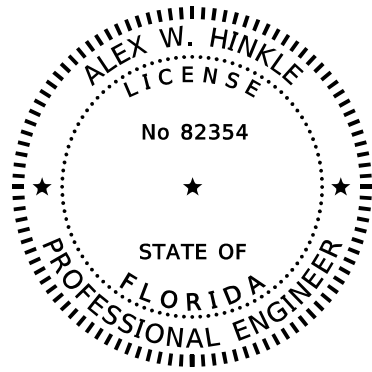
OSCEOLA COUNTY PROJECT MANAGER

JOSE J. SANTIAGO, CFM

60% SUBMITTAL
APRIL 2024

FISCAL YEAR	SHEET NO.
25	IT-1

THE OFFICIAL RECORD OF THIS SHEET IS THE ELECTRONIC FILE DIGITALLY SIGNED AND SEALED UNDER RULE 61G15-23.004, F.A.C.



THIS ITEM HAS BEEN DIGITALLY
SIGNED AND SEALED BY:


ON THE DATE ADJACENT TO THE SEAL.

PRINTED COPIES OF THIS DOCUMENT ARE
NOT CONSIDERED SIGNED AND SEALED
AND THE SIGNATURE MUST BE VERIFIED
ON ANY ELECTRONIC COPIES.

PROTEAN DESIGN GROUP
100 EAST PINE STREET, SUITE 600
ORLANDO, FL 32801
ALEX W. HINKLE, P.E. NO.: 82354

THE ABOVE NAMED PROFESSIONAL ENGINEER SHALL BE RESPONSIBLE FOR THE
FOLLOWING SHEETS IN ACCORDANCE WITH RULE 61G15-23.004, F.A.C.

SHEET NO.	SHEET DESCRIPTION
IT-1	KEY SHEET
IT-2	SIGNATURE SHEET
IT-3 - IT-4	TABULATION OF QUANTITIES
IT-5	GENERAL NOTES
IT-6 - IT-15	INTERCONNECT PLAN
IT-16 - IT-17	SPLICING DIAGRAMS

REVISIONS			<p>JACK BRACK ROAD WIDENING</p>	<p>ENGINEER OF RECORD</p> <p>ALEX W. HINKLE, P.E. LICENSE NUMBER: 82354 PROTEAN DESIGN GROUP 100 EAST PINE STREET, SUITE 600 ORLANDO, FL 32801</p>	 <p>OSCEOLA COUNTY ENGINEERING DEPARTMENT 1 Courthouse Square, Suite 1100 Kissimmee, Florida 34741-5488 Voice: (407) 343-2600 Fax (407) 343-2623</p>	<p>SIGNATURE SHEET</p>	SHEET NO.
DATE	BY	DESCRIPTION					IT-2

TABULATION OF QUANTITIES

PAY ITEM NO.	DESCRIPTION	UNIT	SHEET NUMBERS												TOTAL THIS SHEET		GRAND TOTAL			
			IT-6		IT-7		IT-8		IT-9		IT-10		IT-11		IT-12		PLAN	FINAL	PLAN	FINAL
			PLAN	FINAL	PLAN	FINAL	PLAN	FINAL	PLAN	FINAL	PLAN	FINAL	PLAN	FINAL						
611-2-1	ITSFM LOCATION DOCUMENTATION- INTERSECTION	EA							1								1			
630-2-11	CONDUIT, FURNISH & INSTALL, OPEN TRENCH	LF	1053		1219		1064		1325		1400		1198		1288		8547			
630-2-12	CONDUIT, FURNISH & INSTALL, DIRECTIONAL BORE	LF	92		179		183		75				203		111		843			
633-1-121	FIBER OPTIC CABLE, F&I, UNDERGROUND, 2-12 FIBERS	LF							238								238			
633-1-123	FIBER OPTIC CABLE, F&I, UNDERGROUND, 49-96 FIBERS	LF	1445		1598		1447		1700		1550		1501		1499		10740			
633-2-31	FIBER OPTIC CONNECTION, INSTALL, SPLICE	EA	72						12								84			
633-2-32	FIBER OPTIC CONNECTION, INSTALL, TERMINATION	EA							12								12			
633-3-11	FIBER OPTIC CONNECTION HARDWARE, F&I, SPLICE ENCLOSURE	EA	1						1								2			
633-3-12	FIBER OPTIC CONNECTION HARDWARE, F&I, SPLICE TRAY	EA	8														8			
633-3-14	FIBER OPTIC CONNECTION HARDWARE, F&I, BUFFER TUBE FAN OUT KIT	EA							1								1			
633-3-16	FIBER OPTIC CONNECTION HARDWARE, F&I, PATCH PANEL - FIELD TERMINATED	EA							1								1			
635-2-12	PULL & SPLICE BOX, F&I, 24" X 36" COVER SIZE	EA	2		4		4		3		3		2		2		20			
635-2-13	PULL & SPLICE BOX, F&I, 30" X 60" RECTANGULAR OR 36" ROUND COVER SIZE	EA	1						1								2			
684-1-1	MANAGED FIELD ETHERNET SWITCH, FURNISH & INSTALL	EA							1								1			

REVISIONS		
DATE	BY	DESCRIPTION

**JACK BRACK ROAD
WIDENING**

ENGINEER OF RECORD
ALEX W. HINKLE, P.E.
LICENSE NUMBER: 82354
PROTEAN DESIGN GROUP
100 EAST PINE STREET, SUITE 600
ORLANDO, FL 32801



TABULATION OF QUANTITIES

SHEET NO.
IT-3

THE OFFICIAL RECORD OF THIS SHEET IS THE ELECTRONIC FILE DIGITALLY SIGNED AND SEALED UNDER RULE 61G15-23.004, F.A.C.

TABULATION OF QUANTITIES

PAY ITEM NO.	DESCRIPTION	UNIT	SHEET NUMBERS												TOTAL THIS SHEET		GRAND TOTAL			
			IT-13		IT-14		IT-15													
			PLAN	FINAL	PLAN	FINAL	PLAN	FINAL	PLAN	FINAL	PLAN	FINAL	PLAN	FINAL	PLAN	FINAL	PLAN	FINAL		
611-2-1	ITSFM LOCATION DOCUMENTATION- INTERSECTION	EA																		1
630-2-11	CONDUIT, FURNISH & INSTALL, OPEN TRENCH	LF	591		1306		1155										3052		11599	
630-2-12	CONDUIT, FURNISH & INSTALL, DIRECTIONAL BORE	LF	245		180												425		1268	
633-1-121	FIBER OPTIC CABLE, F&I, UNDERGROUND, 2-12 FIBERS	LF																	238	
633-1-123	FIBER OPTIC CABLE, F&I, UNDERGROUND, 49-96 FIBERS	LF	1636		1586		1355										4577		15317	
633-2-31	FIBER OPTIC CONNECTION, INSTALL, SPLICE	EA																	84	
633-2-32	FIBER OPTIC CONNECTION, INSTALL, TERMINATION	EA																	12	
633-3-11	FIBER OPTIC CONNECTION HARDWARE, F&I, SPLICE ENCLOSURE	EA																	2	
633-3-12	FIBER OPTIC CONNECTION HARDWARE, F&I, SPLICE TRAY	EA																	8	
633-3-14	FIBER OPTIC CONNECTION HARDWARE, F&I, BUFFER TUBE FAN OUT KIT	EA																	1	
633-3-16	FIBER OPTIC CONNECTION HARDWARE, F&I, PATCH PANEL - FIELD TERMINATED	EA																	1	
635-2-12	PULL & SPLICE BOX, F&I, 24" X 36" COVER SIZE	EA	4		2												6		26	
635-2-13	PULL & SPLICE BOX, F&I, 30" X 60" RECTANGULAR OR 36" ROUND COVER SIZE	EA					1										1		3	
684-1-1	MANAGED FIELD ETHERNET SWITCH, FURNISH & INSTALL	EA																	1	

REVISIONS		
DATE	BY	DESCRIPTION

**JACK BRACK ROAD
WIDENING**

ENGINEER OF RECORD
ALEX W. HINKLE, P.E.
LICENSE NUMBER: 82354
PROTEAN DESIGN GROUP
100 EAST PINE STREET, SUITE 600
ORLANDO, FL 32801



TABULATION OF QUANTITIES




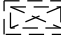


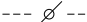
SHEET NO.
IT-4

THE OFFICIAL RECORD OF THIS SHEET IS THE ELECTRONIC FILE DIGITALLY SIGNED AND SEALED UNDER RULE 61G15-23.004, F.A.C.

CONTACTS

ABBREVIATION	DISCIPLINE	NAME	EMAIL	PHONE
TMC	OSCEOLA COUNTY TRAFFIC MANAGEMENT CENTER	CARLOS BONILLA	TMC@OSCEOLA.ORG	407-742-9201
T&T	OSCEOLA COUNTY TRANSPORTATION AND TRANSIT	NICHOLA HARTLEY, P.E.	NICHOLAS.HARTLEY@OSCEOLA.ORG	407-742-0518
TRAFFIC OPS	OSCEOLA COUNTY TRAFFIC OPERATIONS	AARON TORRES	AARON.TORRES@OSCEOLA.ORG	407-738-9405
EOR	ENGINEER OF RECORD	ALEX W. HINKLE	AHINKLE@PROTEANDG.COM	407-246-0044x121

LEGEND:

SYMBOL	DESCRIPTION
	PULL BOX 24" X 36" (FIBER)
	SPLICE VAULT (36" ROUND)
	SIGNAL CABINET
	Exist. Signal Cabinet (TO REMAIN)
	CONDUIT (OPEN TRENCH)
	CONDUIT (DIRECTIONAL BORE)
	Exist. Conduit (TO REMAIN)

GENERAL

- ANY FIBER INTERCONNECT CABLE THAT IS CUT OR DAMAGED DURING CONSTRUCTION MUST BE REPLACED AS AN ENTIRE RUN AND SHALL BE RE-SPLICED WITHIN THE SPLICE CLOSURE AT THE END OF THE RUN. SPLICING OF FIBER INTERCONNECT CABLE BETWEEN SPLICE CLOSURES IS NOT PERMITTED. THE CONTRACTOR SHALL BEAR ALL EXPENSES ASSOCIATED WITH THE INSTALLATION OF THE NEW INTERCONNECT CABLE.

PAY ITEM NOTES

- 630-2-11 & 630-2-12 AN ORANGE #12 AWG LOCATE WIRE SHALL BE INSTALLED WITHIN ANY UNUSED CONDUIT AND SPLICED WITHIN THE PULL BOX TO PROVIDE ELECTRICAL CONTINUITY. THERE SHALL BE ONE SPARE 2" UNDERGROUND CONDUIT INSTALLED PER RUN.
- 633-1-121 & 633-1-123 BACKBONE FIBER OPTIC CABLE SHALL BE AT MINIMUM 96 COUNT, SINGLE MODE AND DIELECTRIC. DROP FIBER OPTIC CABLE SHALL BE AT MINIMUM 12 COUNT, SINGLE MODE AND ARMORED.
- 635-2-11 & 635-2-12 PULL BOXES SHALL BE TIER 15 "QUAZITE" OR QUAZITE EQUIVALENT IN LID DIMENSIONS, CORNER RADIUS, AND THICKNESS. FIBER OPTIC SPLICE VAULT AT CABINET SHALL BE 36" ROUND TYPE. COVERS SHALL BE STAMPED: "OSCEOLA COUNTY ATMS" FOR OTHER ATMS APPLICATIONS. "OSCEOLA COUNTY FIBER OPTIC" FOR ALL FIBER OPTIC APPLICATIONS.

FIBER OPTIC NOTES

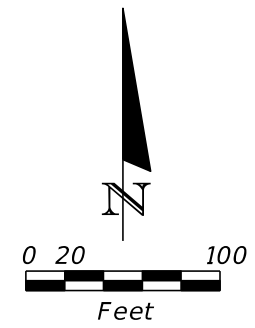
- THE MAXIMUM DOWNTIME FOR EXISTING ITS CAUSED BY CONSTRUCTION SHALL BE LESS THAN THE ALLOWABLE TIMES IN TABLE 1. PRIOR TO DISCONNECTING EXISTING POWER AND/OR COMMUNICATIONS, COORDINATE AND SCHEDULE SYSTEM DOWNTIME WITH THE TRAFFIC MANAGEMENT CENTER.
- INSTALL A MAXIMUM OF ONE FIBER OPTIC CABLE PER PROPOSED CONDUIT.
- NO OTHER SPLICES WILL BE ALLOWED THAN AS SHOWN IN THE PLANS.

ABBREVIATIONS

- DB - DIRECTIONAL BORE
- FOC - FIBER OPTIC CABLE
- FOPB - FIBER OPTIC PULL BOX
- FSV - FIBER OPTIC SPLICE VAULT
- OT - OPEN TRENCH
- SM - SINGLE MODE

ITEM	ALLOWABLE TIME
BACKBONE COMMUNICATIONS SYSTEM	4 HOURS
CAMERA SYSTEM	24 HOURS
VEHICLE DETECTION SYSTEM	24 HOURS

REVISIONS			ENGINEER OF RECORD		OSCEOLA COUNTY ENGINEERING DEPARTMENT 1 Courthouse Square, Suite 1100 Kissimmee, Florida 34741-5488 Voice: (407) 343-2600 Fax (407) 343-2623	GENERAL NOTES	SHEET NO.
DATE	BY	DESCRIPTION	ALEX W. HINKLE, P.E. LICENSE NUMBER: 82354 PROTEAN DESIGN GROUP 100 EAST PINE STREET, SUITE 600 ORLANDO, FL 32801				IT-5
JACK BRACK ROAD WIDENING							



BEGIN PROJECT
STA. 101+16.66
Q CONST. JACK BRACK RD.

3-2" CONDUIT		96 SM FOC (BACKBONE)	
OT CONDUIT	630-2-11	274 LF	
96 SM FOC	633-1-123	274 LF	

96 SM FOC	633-1-123	50 LF
FIBER PULL BOX	635-2-12	1 EA

PROPOSED FIBER SPLICE VAULT (SEE NOTE 1, THIS SHEET)			
96 SM FOC (SLACK)	633-1-123	200 LF	
FOC SPLICE	633-2-31	72 EA	
SPLICE ENCLOSURE	633-3-11	1 EA	
FIBER SPLICE VAULT	635-2-13	1 EA	

96 SM FOC	633-1-123	50 LF
FIBER PULL BOX	635-2-12	1 EA

3-2" CONDUIT		96 SM FOC (BACKBONE)	
OT CONDUIT	630-2-11	779 LF	
96 SM FOC	633-1-123	779 LF	

3-2" CONDUIT		96 SM FOC (BACKBONE)	
DB CONDUIT	630-2-12	92 LF	
96 SM FOC	633-1-123	92 LF	

EXIST. R/W LINE

EXIST. R/W LINE

EXIST. R/W LINE

EXIST. R/W LINE

Exist. 72 SM FOC
(TO REMAIN)

Exist. 72 SM FOC
(TO REMAIN)

Exist. 12 SM FOC (DROP)
(TO REMAIN)

Exist. Signal Cabinet
(TO REMAIN)

MATCHLINE STA. 112+80.00
SEE SHEET IT-7

NOTE:
1. REPLACE THE EXISTING FIBER OPTIC SPLICE BOX WITH PROPOSED FIBER OPTIC SPLICE VAULT SUCH THAT EXISTING FIBER OPTIC CABLE AND SLACK FOR THE EXISTING 12 SM FOC (DROP) AND THE EXISTING 72 SM FOC (BACKBONE) IS NOT IMPACTED. REPLACE EXISTING FIBER OPTIC SPLICE ENCLOSURE AND SPLICE THE PROPOSED 96 SM FOC (BACKBONE) TO THE EXISTING 72 SM FOC (BACKBONE). SEE SPLICING DIAGRAM FOR ADDITIONAL DETAILS.

REVISIONS		
DATE	BY	DESCRIPTION

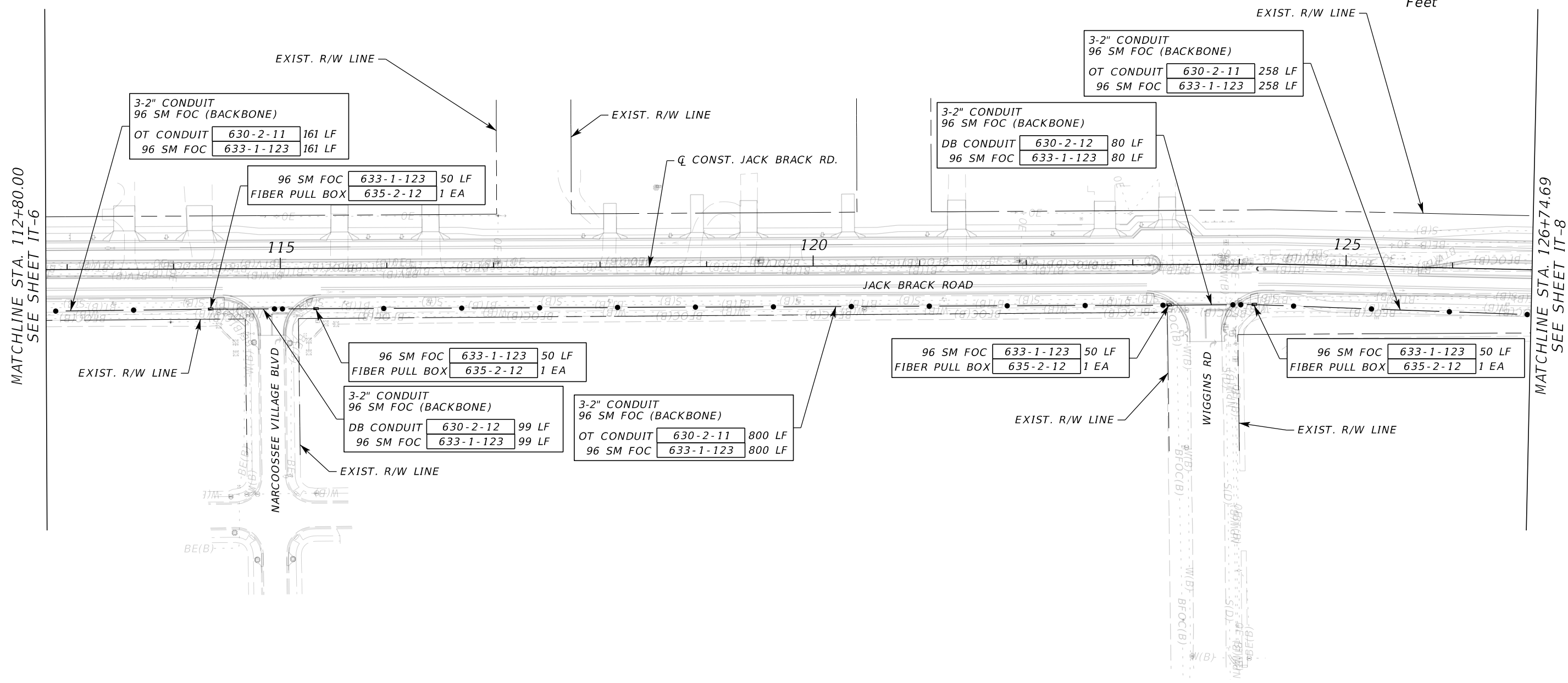
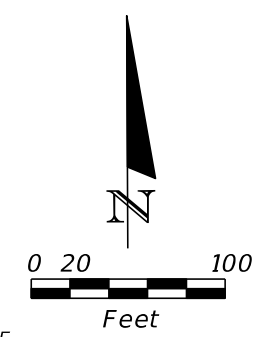
**JACK BRACK ROAD
WIDENING**

ENGINEER OF RECORD
ALEX W. HINKLE, P.E.
LICENSE NUMBER: 82354
PROTEAN DESIGN GROUP
100 EAST PINE STREET, SUITE 600
ORLANDO, FL 32801

**OSCEOLA COUNTY
ENGINEERING DEPARTMENT**
1 Courthouse Square, Suite 1100
Kissimmee, Florida 34741-5488
Voice: (407) 343-2600 Fax (407) 343-2623

INTERCONNECT PLAN (1)

SHEET NO.
IT-6



MATCHLINE STA 112+80.00
SEE SHEET IT-6

MATCHLINE STA 126+74.69
SEE SHEET IT-8

REVISIONS		
DATE	BY	DESCRIPTION

JACK BRACK ROAD WIDENING

ENGINEER OF RECORD
ALEX W. HINKLE, P.E.
LICENSE NUMBER: 82354
PROTEAN DESIGN GROUP
100 EAST PINE STREET, SUITE 600
ORLANDO, FL 32801

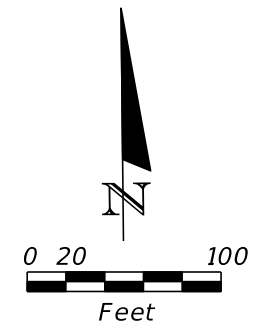


OSCEOLA COUNTY
ENGINEERING DEPARTMENT
1 Courthouse Square, Suite 1100
Kissimmee, Florida 34741-5488
Voice: (407) 343-2600 Fax (407) 343-2623

INTERCONNECT PLAN (2)

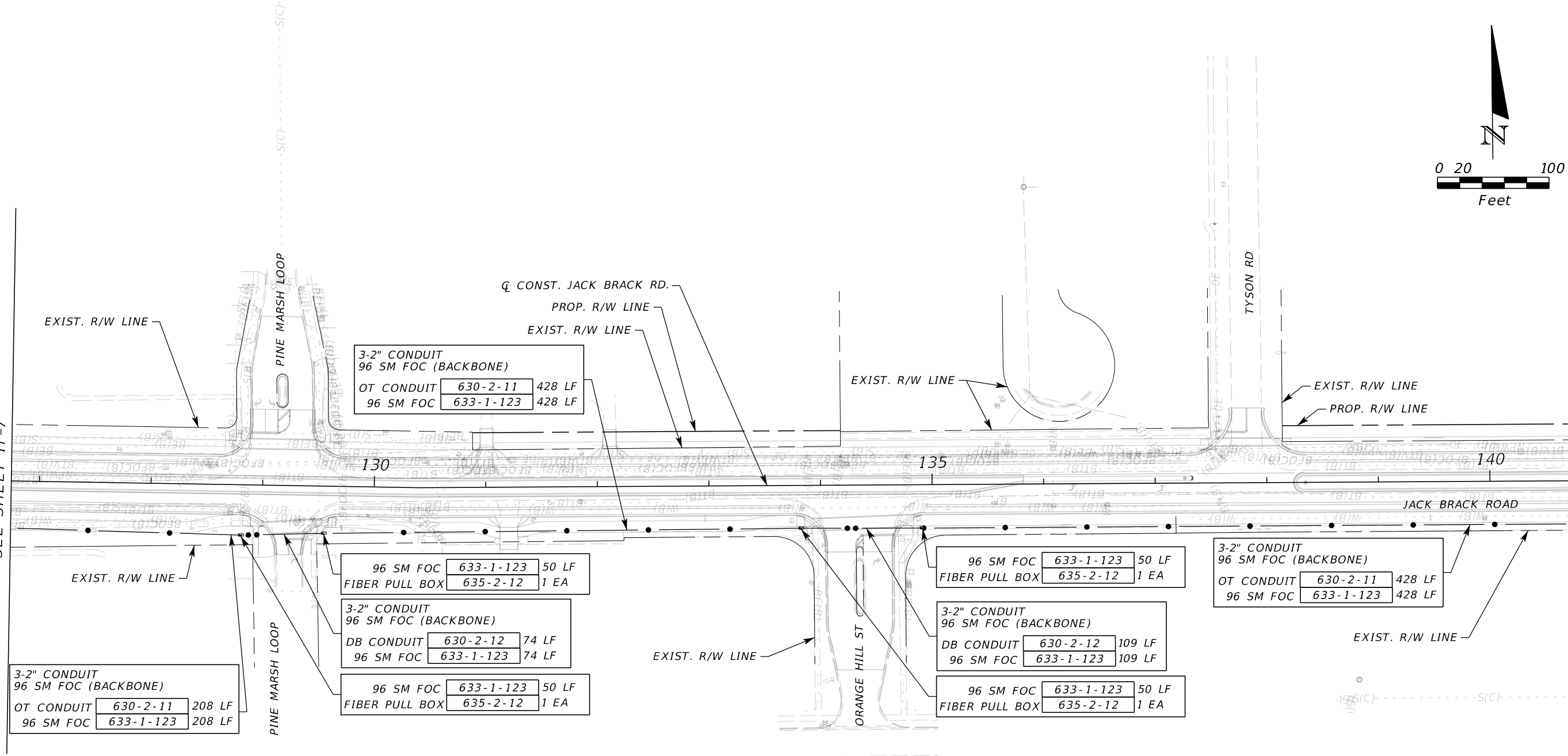
SHEET NO.
IT-7

THE OFFICIAL RECORD OF THIS SHEET IS THE ELECTRONIC FILE DIGITALLY SIGNED AND SEALED UNDER RULE 61G15-23.004, F.A.C.



MATCHLINE STA. 126+74.69
SEE SHEET IT-7

MATCHLINE STA. 140+72.19
SEE SHEET IT-9



REVISIONS		
DATE	BY	DESCRIPTION

**JACK BRACK ROAD
WIDENING**

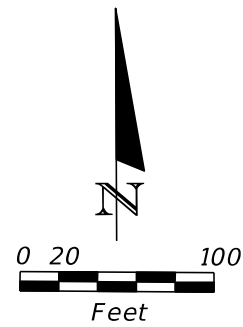
ENGINEER OF RECORD
ALEX W. HINKLE, P.E.
LICENSE NUMBER: 82354
PROTEAN DESIGN GROUP
100 EAST PINE STREET, SUITE 600
ORLANDO, FL 32801



INTERCONNECT PLAN (3)

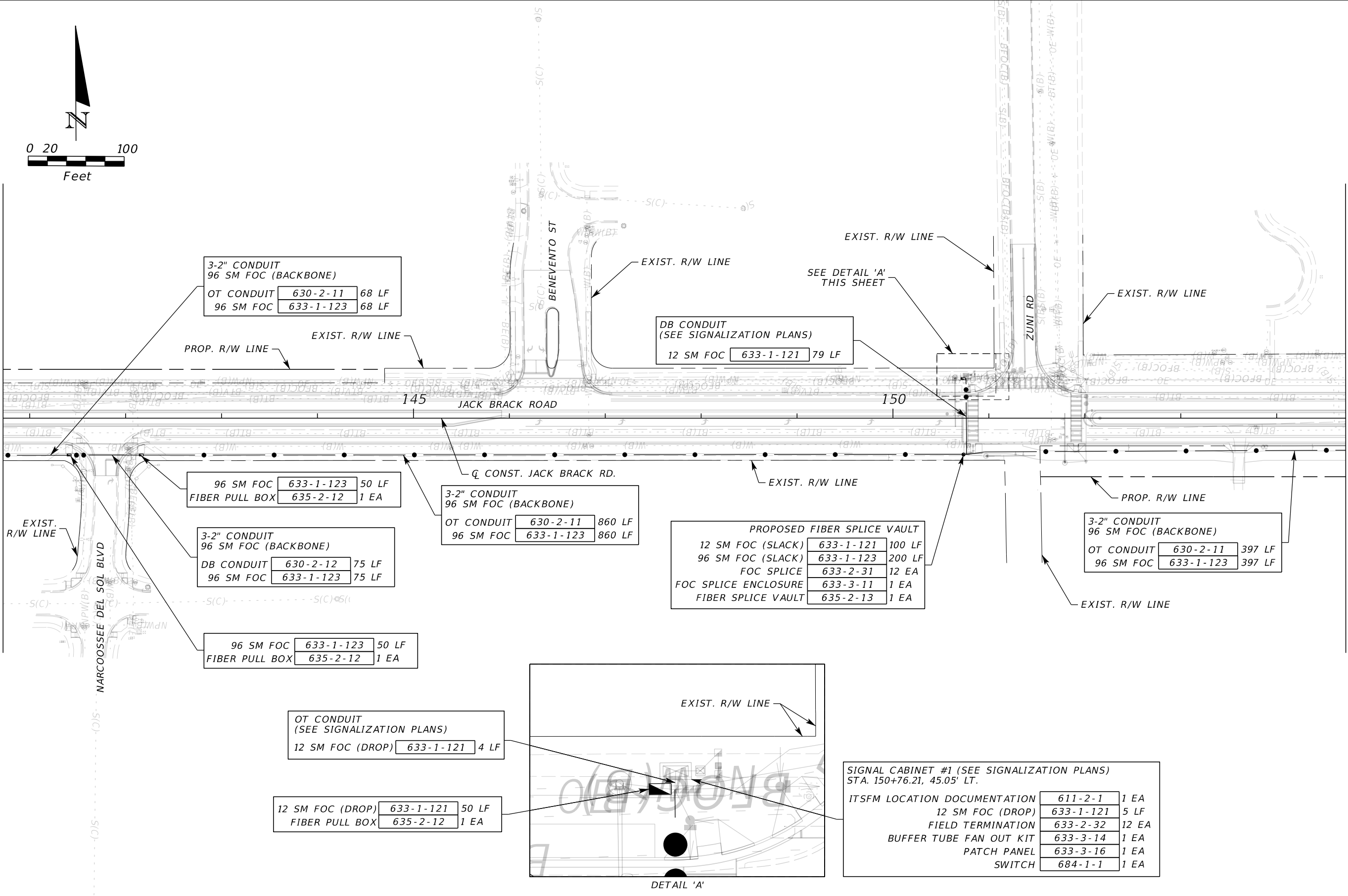
SHEET NO.
IT-8

THE OFFICIAL RECORD OF THIS SHEET IS THE ELECTRONIC FILE DIGITALLY SIGNED AND SEALED UNDER RULE 61G15-23.004, F.A.C.



MATCHLINE STA. 140+72.19
SEE SHEET IT-8

MATCHLINE STA. 154+71.92
SEE SHEET IT-10



3-2" CONDUIT 96 SM FOC (BACKBONE)	
OT CONDUIT	630-2-11 68 LF
96 SM FOC	633-1-123 68 LF

DB CONDUIT (SEE SIGNALIZATION PLANS)	
12 SM FOC	633-1-121 79 LF

96 SM FOC	633-1-123 50 LF
FIBER PULL BOX	635-2-12 1 EA

3-2" CONDUIT 96 SM FOC (BACKBONE)	
OT CONDUIT	630-2-11 860 LF
96 SM FOC	633-1-123 860 LF

PROPOSED FIBER SPLICE VAULT		
12 SM FOC (SLACK)	633-1-121	100 LF
96 SM FOC (SLACK)	633-1-123	200 LF
FOC SPLICE	633-2-31	12 EA
FOC SPLICE ENCLOSURE	633-3-11	1 EA
FIBER SPLICE VAULT	635-2-13	1 EA

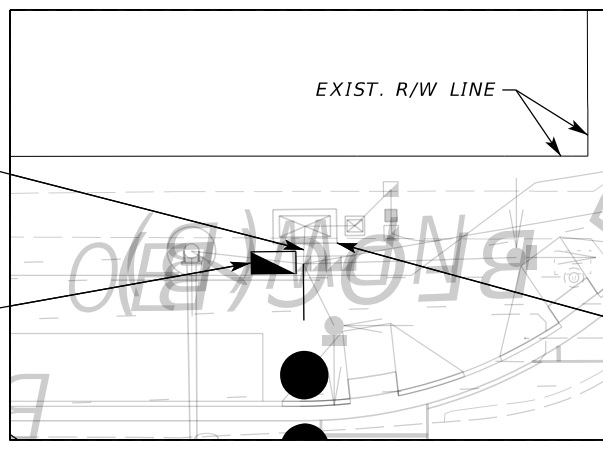
3-2" CONDUIT 96 SM FOC (BACKBONE)	
OT CONDUIT	630-2-11 397 LF
96 SM FOC	633-1-123 397 LF

3-2" CONDUIT 96 SM FOC (BACKBONE)	
DB CONDUIT	630-2-12 75 LF
96 SM FOC	633-1-123 75 LF

96 SM FOC	633-1-123 50 LF
FIBER PULL BOX	635-2-12 1 EA

OT CONDUIT (SEE SIGNALIZATION PLANS)	
12 SM FOC (DROP)	633-1-121 4 LF

12 SM FOC (DROP)	633-1-121 50 LF
FIBER PULL BOX	635-2-12 1 EA



SIGNAL CABINET #1 (SEE SIGNALIZATION PLANS) STA. 150+76.21, 45.05' LT.		
ITSFM LOCATION DOCUMENTATION	611-2-1	1 EA
12 SM FOC (DROP)	633-1-121	5 LF
FIELD TERMINATION	633-2-32	12 EA
BUFFER TUBE FAN OUT KIT	633-3-14	1 EA
PATCH PANEL	633-3-16	1 EA
SWITCH	684-1-1	1 EA

REVISIONS		
DATE	BY	DESCRIPTION

**JACK BRACK ROAD
WIDENING**

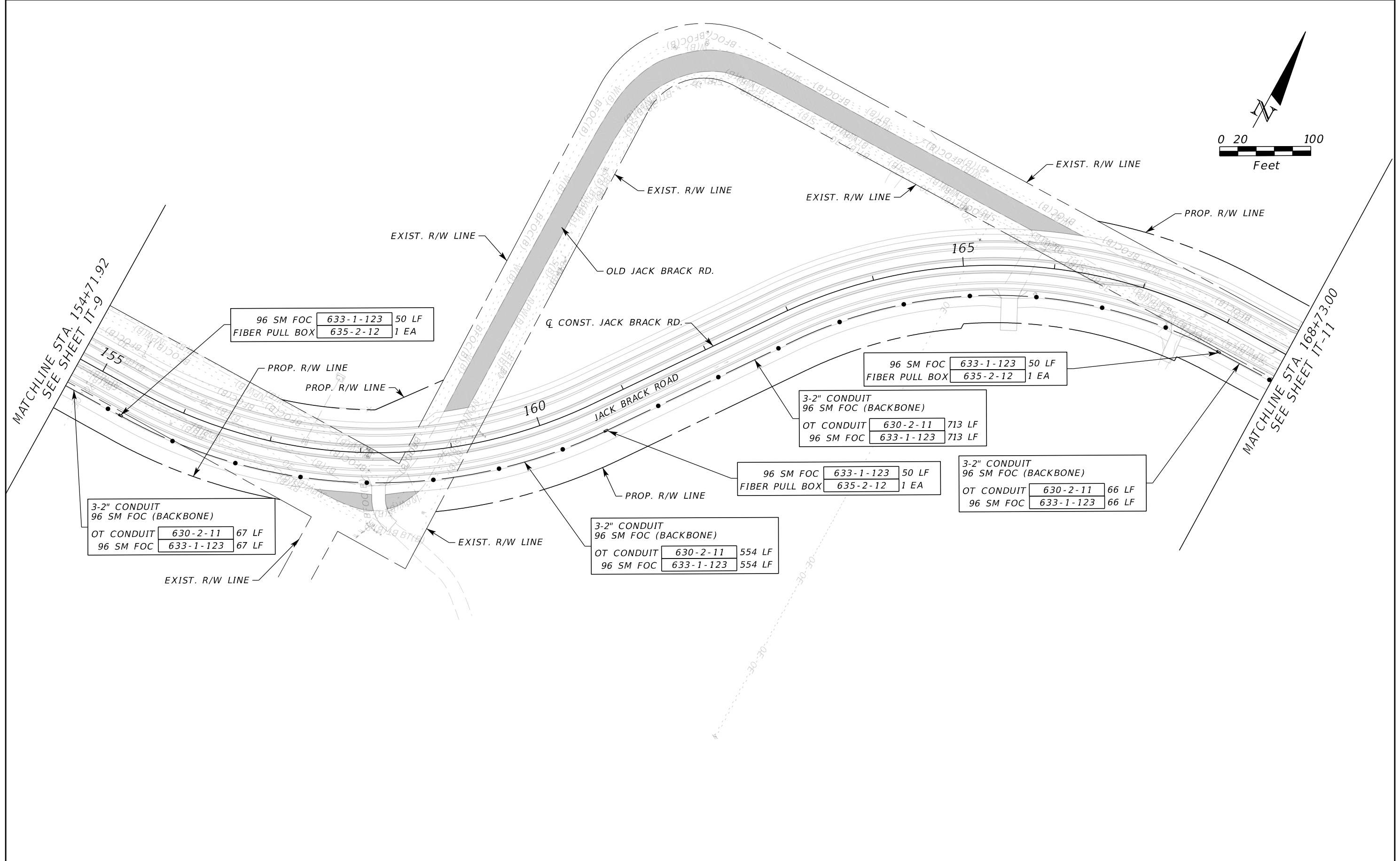
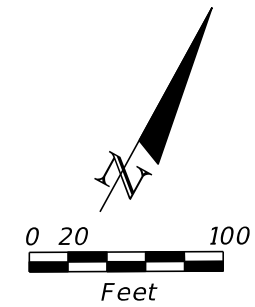
ENGINEER OF RECORD
ALEX W. HINKLE, P.E.
LICENSE NUMBER: 82354
PROTEAN DESIGN GROUP
100 EAST PINE STREET, SUITE 600
ORLANDO, FL 32801



INTERCONNECT PLAN (4)

SHEET NO.
IT-9

THE OFFICIAL RECORD OF THIS SHEET IS THE ELECTRONIC FILE DIGITALLY SIGNED AND SEALED UNDER RULE 61G15-23.004, F.A.C.



96 SM FOC	633-1-123	50 LF
FIBER PULL BOX	635-2-12	1 EA

96 SM FOC	633-1-123	50 LF
FIBER PULL BOX	635-2-12	1 EA

3-2" CONDUIT	96 SM FOC (BACKBONE)	
OT CONDUIT	630-2-11	713 LF
96 SM FOC	633-1-123	713 LF

96 SM FOC	633-1-123	50 LF
FIBER PULL BOX	635-2-12	1 EA

3-2" CONDUIT	96 SM FOC (BACKBONE)	
OT CONDUIT	630-2-11	66 LF
96 SM FOC	633-1-123	66 LF

3-2" CONDUIT	96 SM FOC (BACKBONE)	
OT CONDUIT	630-2-11	67 LF
96 SM FOC	633-1-123	67 LF

3-2" CONDUIT	96 SM FOC (BACKBONE)	
OT CONDUIT	630-2-11	554 LF
96 SM FOC	633-1-123	554 LF

REVISIONS		
DATE	BY	DESCRIPTION

**JACK BRACK ROAD
WIDENING**

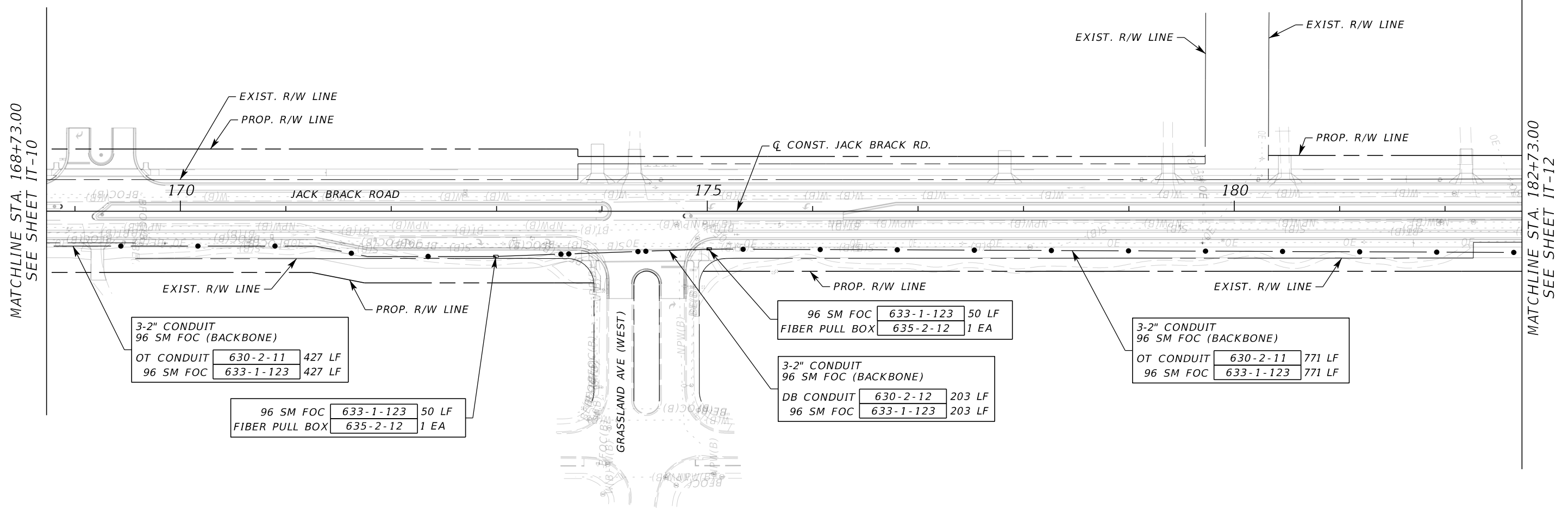
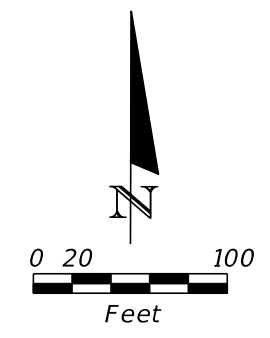
ENGINEER OF RECORD
ALEX W. HINKLE, P.E.
LICENSE NUMBER: 82354
PROTEAN DESIGN GROUP
100 EAST PINE STREET, SUITE 600
ORLANDO, FL 32801



INTERCONNECT PLAN (5)

SHEET NO.
IT-10

THE OFFICIAL RECORD OF THIS SHEET IS THE ELECTRONIC FILE DIGITALLY SIGNED AND SEALED UNDER RULE 61G15-23.004, F.A.C.



MATCHLINE STA. 168+73.00
SEE SHEET IT-10

MATCHLINE STA. 182+73.00
SEE SHEET IT-12

3-2" CONDUIT 96 SM FOC (BACKBONE)			
OT CONDUIT	630-2-11	427 LF	
96 SM FOC	633-1-123	427 LF	

96 SM FOC	633-1-123	50 LF	
FIBER PULL BOX	635-2-12	1 EA	

96 SM FOC	633-1-123	50 LF	
FIBER PULL BOX	635-2-12	1 EA	

3-2" CONDUIT 96 SM FOC (BACKBONE)			
DB CONDUIT	630-2-12	203 LF	
96 SM FOC	633-1-123	203 LF	

3-2" CONDUIT 96 SM FOC (BACKBONE)			
OT CONDUIT	630-2-11	771 LF	
96 SM FOC	633-1-123	771 LF	

REVISIONS		
DATE	BY	DESCRIPTION

**JACK BRACK ROAD
WIDENING**

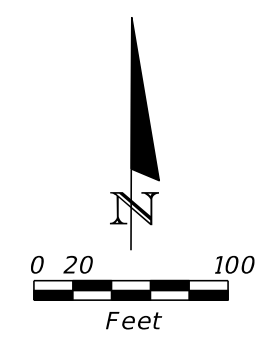
ENGINEER OF RECORD
ALEX W. HINKLE, P.E.
LICENSE NUMBER: 82354
PROTEAN DESIGN GROUP
100 EAST PINE STREET, SUITE 600
ORLANDO, FL 32801

**OSCEOLA COUNTY
ENGINEERING DEPARTMENT**
1 Courthouse Square, Suite 1100
Kissimmee, Florida 34741-5488
Voice: (407) 343-2600 Fax (407) 343-2623

INTERCONNECT PLAN (6)

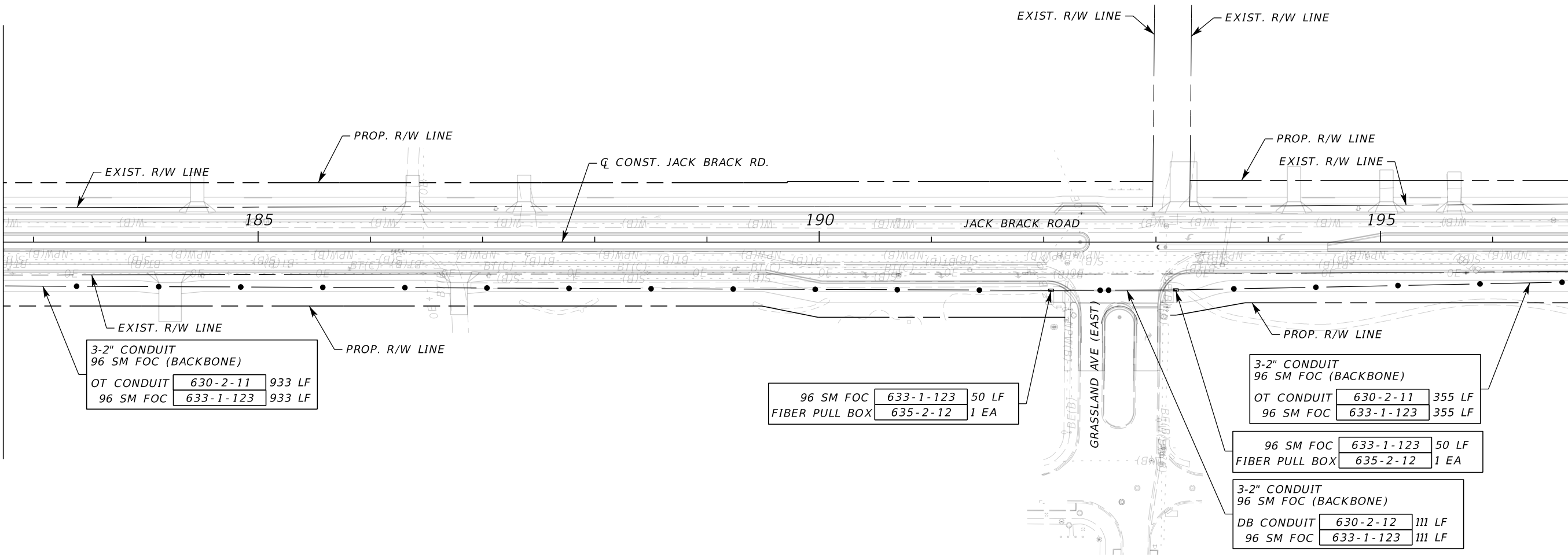
SHEET NO.
IT-11

THE OFFICIAL RECORD OF THIS SHEET IS THE ELECTRONIC FILE DIGITALLY SIGNED AND SEALED UNDER RULE 61G15-23.004, F.A.C.



MATCHLINE STA. 182+73.00
SEE SHEET IT-11

MATCHLINE STA. 196+73.00
SEE SHEET IT-13



3-2" CONDUIT 96 SM FOC (BACKBONE)	
OT CONDUIT	630-2-11 933 LF
96 SM FOC	633-1-123 933 LF

96 SM FOC	633-1-123	50 LF
FIBER PULL BOX	635-2-12	1 EA

3-2" CONDUIT 96 SM FOC (BACKBONE)	
OT CONDUIT	630-2-11 355 LF
96 SM FOC	633-1-123 355 LF

96 SM FOC	633-1-123	50 LF
FIBER PULL BOX	635-2-12	1 EA

3-2" CONDUIT 96 SM FOC (BACKBONE)	
DB CONDUIT	630-2-12 111 LF
96 SM FOC	633-1-123 111 LF

REVISIONS		
DATE	BY	DESCRIPTION

JACK BRACK ROAD WIDENING

ENGINEER OF RECORD
ALEX W. HINKLE, P.E.
LICENSE NUMBER: 82354
PROTEAN DESIGN GROUP
100 EAST PINE STREET, SUITE 600
ORLANDO, FL 32801

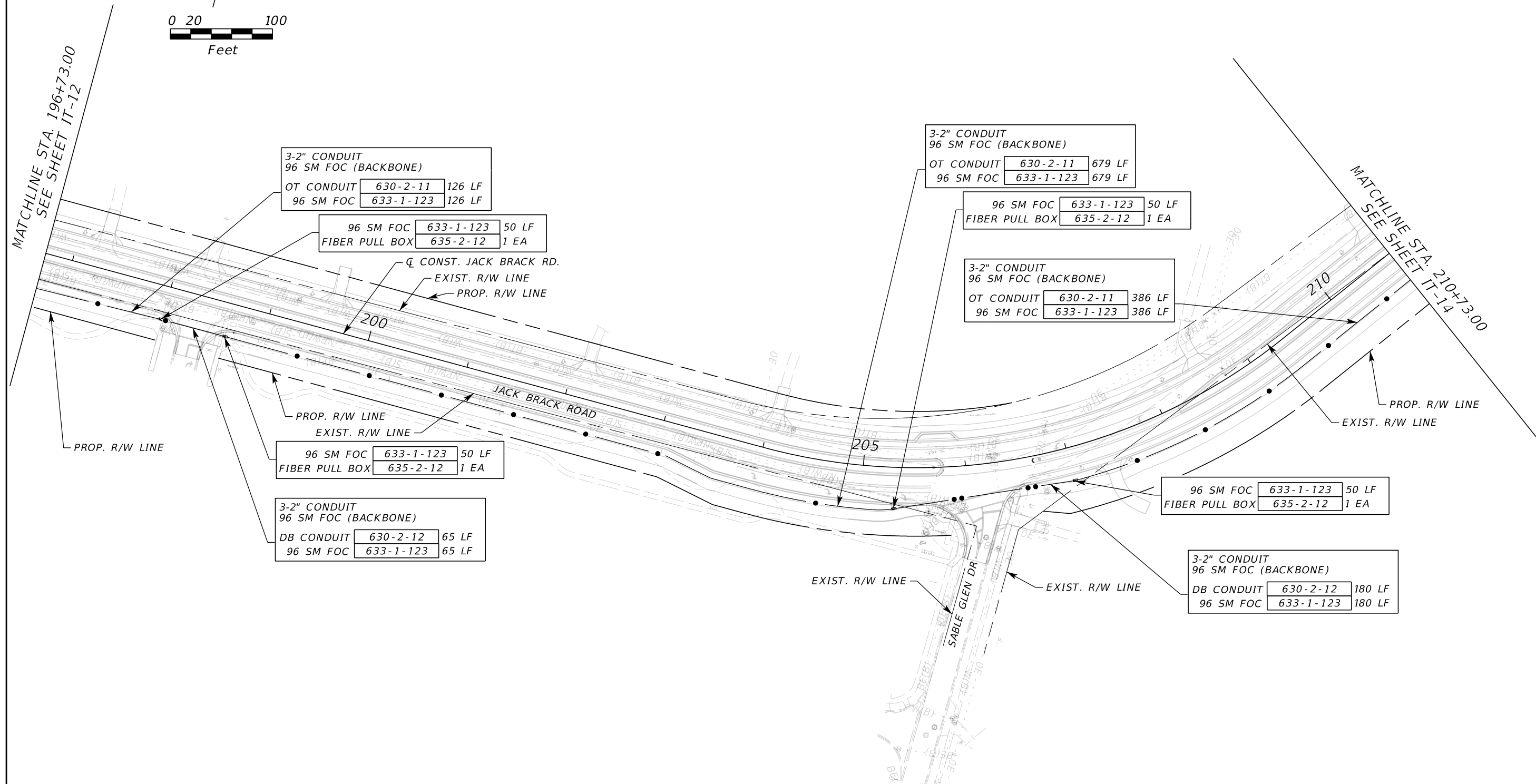
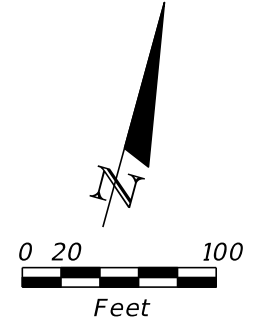


**OSCEOLA COUNTY
ENGINEERING DEPARTMENT**
1 Courthouse Square, Suite 1100
Kissimmee, Florida 34741-5488
Voice: (407) 343-2600 Fax (407) 343-2623

INTERCONNECT PLAN (7)

SHEET NO.
IT-12

THE OFFICIAL RECORD OF THIS SHEET IS THE ELECTRONIC FILE DIGITALLY SIGNED AND SEALED UNDER RULE 61G15-23.004, F.A.C.



3-2" CONDUIT
96 SM FOC (BACKBONE)
OT CONDUIT 630-2-11 126 LF
96 SM FOC 633-1-123 126 LF

96 SM FOC 633-1-123 50 LF
FIBER PULL BOX 635-2-12 1 EA

3-2" CONDUIT
96 SM FOC (BACKBONE)
OT CONDUIT 630-2-11 679 LF
96 SM FOC 633-1-123 679 LF

96 SM FOC 633-1-123 50 LF
FIBER PULL BOX 635-2-12 1 EA

3-2" CONDUIT
96 SM FOC (BACKBONE)
OT CONDUIT 630-2-11 386 LF
96 SM FOC 633-1-123 386 LF

96 SM FOC 633-1-123 50 LF
FIBER PULL BOX 635-2-12 1 EA

3-2" CONDUIT
96 SM FOC (BACKBONE)
DB CONDUIT 630-2-12 65 LF
96 SM FOC 633-1-123 65 LF

96 SM FOC 633-1-123 50 LF
FIBER PULL BOX 635-2-12 1 EA

3-2" CONDUIT
96 SM FOC (BACKBONE)
DB CONDUIT 630-2-12 180 LF
96 SM FOC 633-1-123 180 LF

REVISIONS		
DATE	BY	DESCRIPTION

JACK BRACK ROAD WIDENING

ENGINEER OF RECORD
ALEX W. HINKLE, P.E.
LICENSE NUMBER: 82354
PROTEAN DESIGN GROUP
100 EAST PINE STREET, SUITE 600
ORLANDO, FL 32801

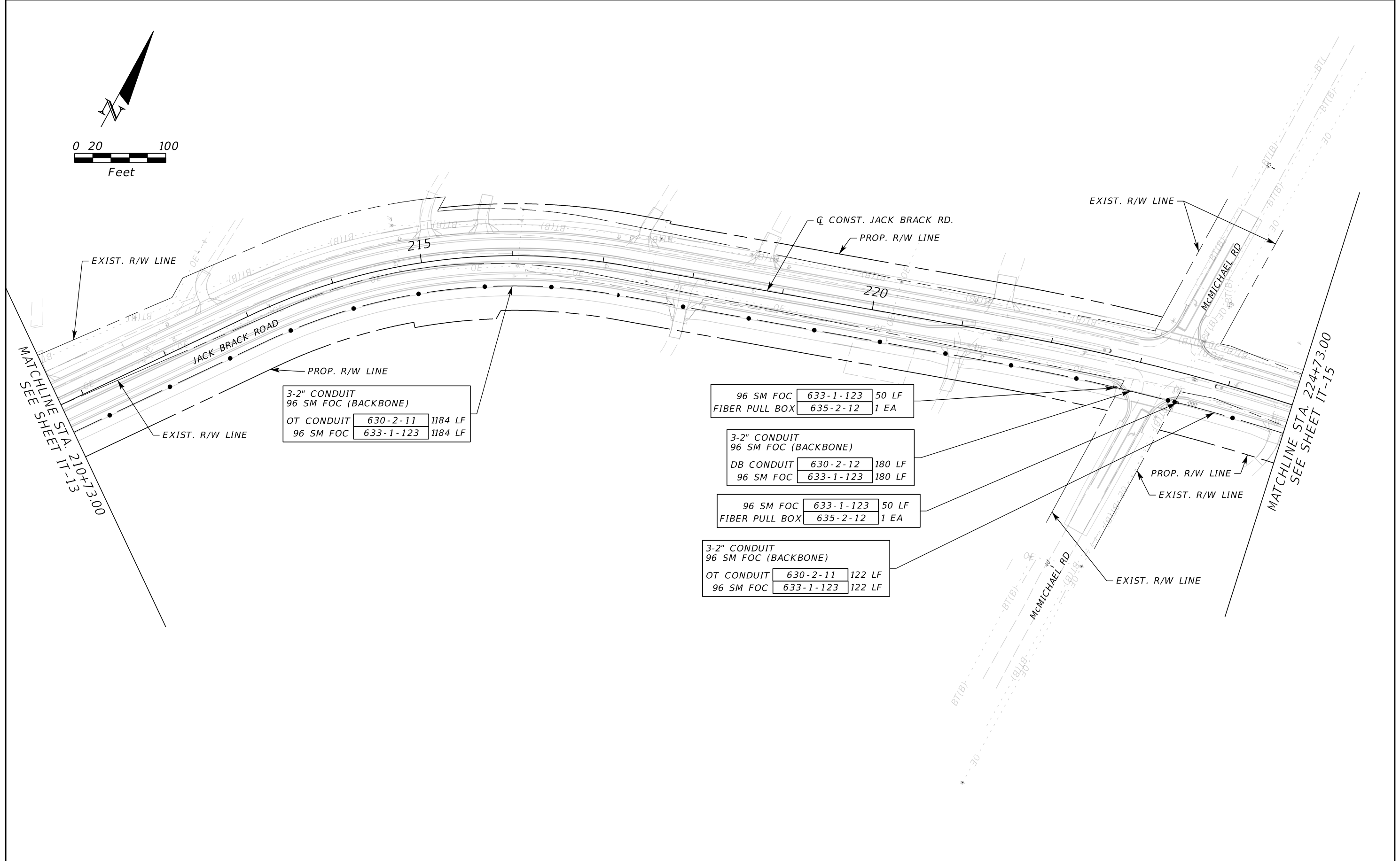
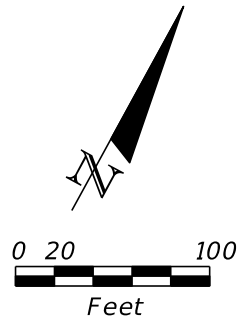


**OSCEOLA COUNTY
ENGINEERING DEPARTMENT**
1 Courthouse Square, Suite 1100
Kissimmee, Florida 34741-5488
Voice: (407) 343-2600 Fax (407) 343-2623

INTERCONNECT PLAN (8)

SHEET
NO.
IT-13

THE OFFICIAL RECORD OF THIS SHEET IS THE ELECTRONIC FILE DIGITALLY SIGNED AND SEALED UNDER RULE 61G15-23.004, F.A.C.



REVISIONS		
DATE	BY	DESCRIPTION

**JACK BRACK ROAD
WIDENING**

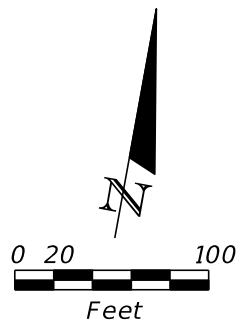
ENGINEER OF RECORD
ALEX W. HINKLE, P.E.
LICENSE NUMBER: 82354
PROTEAN DESIGN GROUP
100 EAST PINE STREET, SUITE 600
ORLANDO, FL 32801



INTERCONNECT PLAN (9)

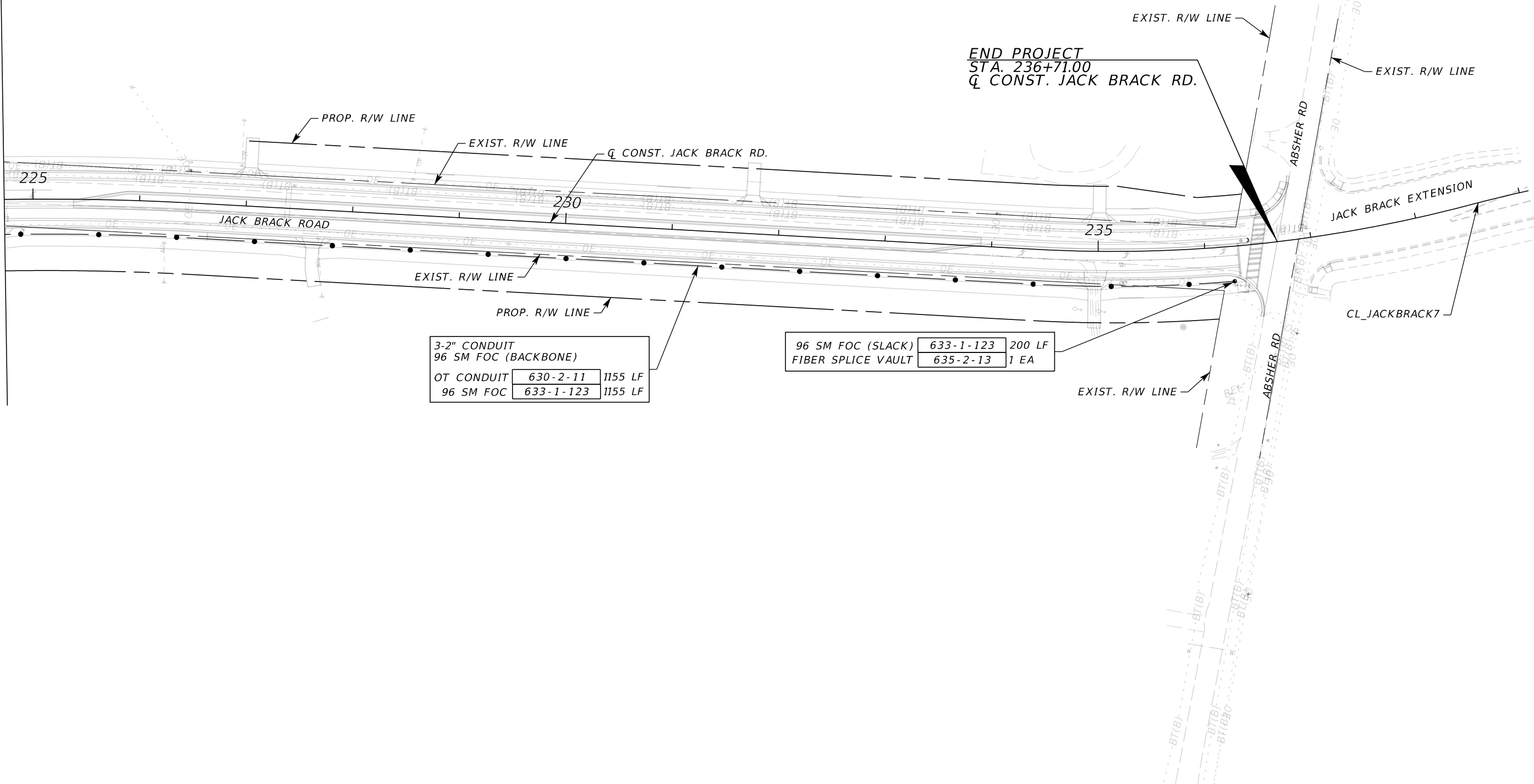
SHEET NO.
IT-14

THE OFFICIAL RECORD OF THIS SHEET IS THE ELECTRONIC FILE DIGITALLY SIGNED AND SEALED UNDER RULE 61G15-23.004, F.A.C.



MATCHLINE STA. 224+73.00
SEE SHEET IT-14

END PROJECT
STA. 236+71.00
Q CONST. JACK BRACK RD.



3-2" CONDUIT		
96 SM FOC (BACKBONE)		
OT CONDUIT	630-2-11	1155 LF
96 SM FOC	633-1-123	1155 LF

96 SM FOC (SLACK)	633-1-123	200 LF
FIBER SPLICE VAULT	635-2-13	1 EA

REVISIONS		
DATE	BY	DESCRIPTION

**JACK BRACK ROAD
WIDENING**

ENGINEER OF RECORD
ALEX W. HINKLE, P.E.
LICENSE NUMBER: 82354
PROTEAN DESIGN GROUP
100 EAST PINE STREET, SUITE 600
ORLANDO, FL 32801



OSCEOLA COUNTY
ENGINEERING DEPARTMENT
1 Courthouse Square, Suite 1100
Kissimmee, Florida 34741-5488
Voice: (407) 343-2600 Fax (407) 343-2623

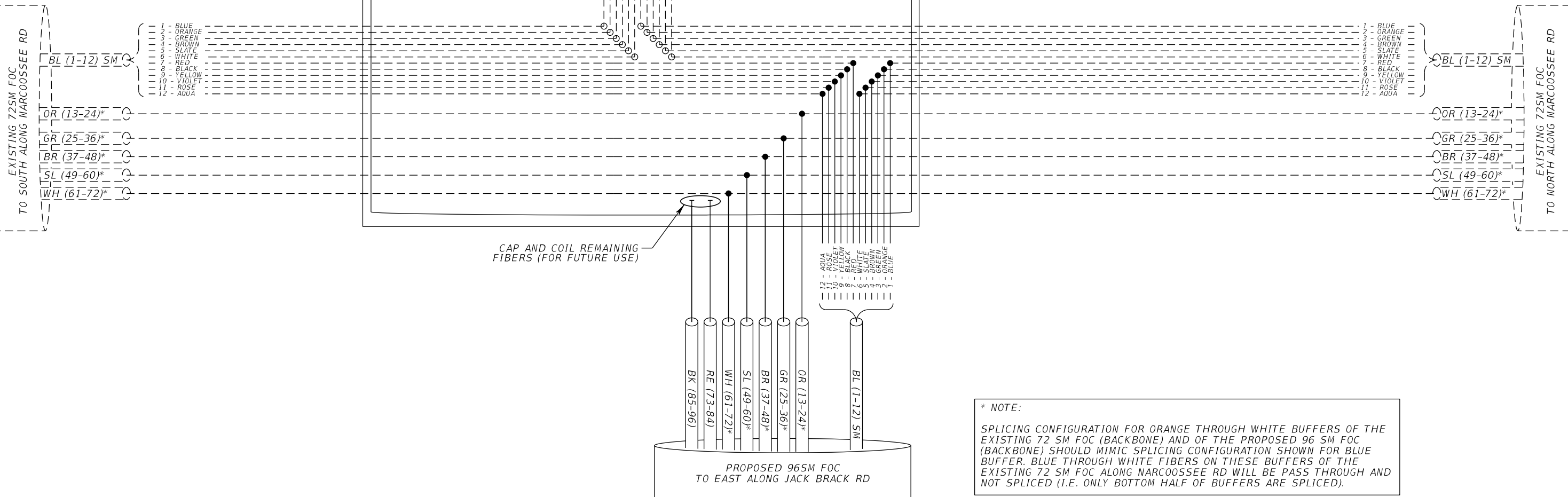
INTERCONNECT PLAN (10)

SHEET NO.
IT-15

THE OFFICIAL RECORD OF THIS SHEET IS THE ELECTRONIC FILE DIGITALLY SIGNED AND SEALED UNDER RULE 61G15-23.004, F.A.C.

LEGEND

- FUSION SPLICE (PROPOSED) (SM BLUE) BUFFER TUBE
- FUSION SPLICE (EXISTING) SM UNTERMINATED FIBER
- ⊗ BREAK EXISTING FUSION SPLICE SC STD. CONNECTOR
- CONNECTORIZED (EXISTING) --- FIBER
- CONNECTORIZED (PROPOSED) [Grid] ETHERNET SWITCH
- [Grid] PATCH PANEL



*** NOTE:**
 SPLICING CONFIGURATION FOR ORANGE THROUGH WHITE BUFFERS OF THE EXISTING 72 SM FOC (BACKBONE) AND OF THE PROPOSED 96 SM FOC (BACKBONE) SHOULD MIMIC SPLICING CONFIGURATION SHOWN FOR BLUE BUFFER. BLUE THROUGH WHITE FIBERS ON THESE BUFFERS OF THE EXISTING 72 SM FOC ALONG NARCOOSSEE RD WILL BE PASS THROUGH AND NOT SPLICED (I.E. ONLY BOTTOM HALF OF BUFFERS ARE SPLICED).

REVISIONS		
DATE	BY	DESCRIPTION

**JACK BRACK ROAD
 WIDENING**

ENGINEER OF RECORD
 ALEX W. HINKLE, P.E.
 LICENSE NUMBER: 82354
 PROTEAN DESIGN GROUP
 100 EAST PINE STREET, SUITE 600
 ORLANDO, FL 32801



SPLICING DIAGRAM (1)

SHEET NO.
 IT-16

THE OFFICIAL RECORD OF THIS SHEET IS THE ELECTRONIC FILE DIGITALLY SIGNED AND SEALED UNDER RULE 61G15-23.004, F.A.C.

LEGEND

- FUSION SPLICE (PROPOSED) (SM BLUE) BUFFER TUBE
- FUSION SPLICE (EXISTING) UNTERMINATED FIBER
- ⊗ BREAK EXISTING FUSION SPLICE
- CONNECTORIZED (EXISTING)
- CONNECTORIZED (PROPOSED)
- FIBER
- EXISTING FIBER
- ⊞⊞⊞⊞⊞⊞ ETHERNET SWITCH
- ▮ PATCH PANEL

PROPOSED FIBER OPTIC PULL BOX
JACK BRACK RD @ SW CORNER OF ZUNI RD

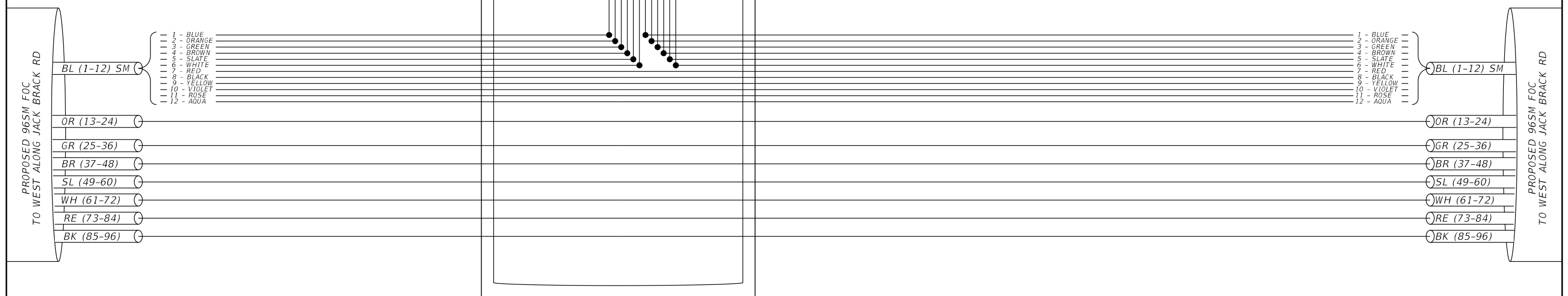
PROPOSED SPLICE ENCLOSURE

PROP. 12 SM FOC (DROP)

PROPOSED SIGNAL CABINET
STA. 150+88.15, 46.56' LT
JACK BRACK RD @ NW CORNER OF ZUNI RD

PROPOSED MFES

PROPOSED FIELD TERMINATED
FIBER PATCH PANEL (ST)



REVISIONS		
DATE	BY	DESCRIPTION

**JACK BRACK ROAD
WIDENING**

ENGINEER OF RECORD
ALEX W. HINKLE, P.E.
LICENSE NUMBER: 82354
PROTEAN DESIGN GROUP
100 EAST PINE STREET, SUITE 600
ORLANDO, FL 32801

**OSCEOLA COUNTY
ENGINEERING DEPARTMENT**
1 Courthouse Square, Suite 1100
Kissimmee, Florida 34741-5488
Voice: (407) 343-2600 Fax (407) 343-2623

SPLICING DIAGRAM (2)

SHEET
NO.
IT-17

THE OFFICIAL RECORD OF THIS SHEET IS THE ELECTRONIC FILE DIGITALLY SIGNED AND SEALED UNDER RULE 61G15-23.004, F.A.C.