



Neptune Road Improvements from Partin Settlement Road to US 192

September 2018

Volume 1 of 4

Osceola County is evaluating improving Neptune Road, from Partin Settlement Road to US 192. This study, a Project Development and Environment (PD&E) Study will evaluate various alternative improvements and their impacts to the physical, natural, social, and cultural environments.

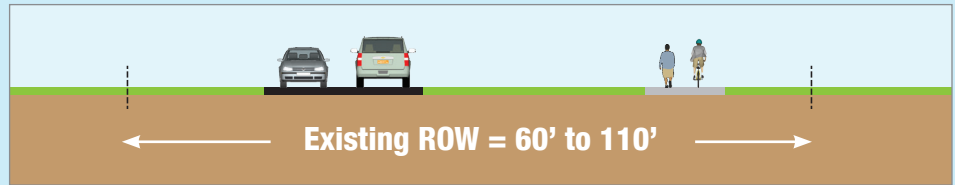
Public involvement is a very important part of the study process and all comments received will be considered in developing a preferred improvement alternative for Neptune Road.



Partin Settlement Road to Old Canoe Creek Road

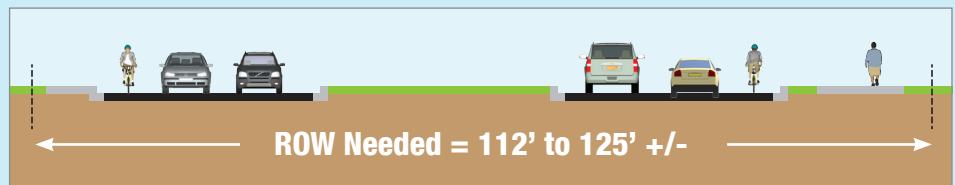
Existing Conditions:

2-lanes with a 10-foot multi use path on one side. Existing right of way (ROW) generally ranges from 60-feet to 110-feet.



Potential Improvement:

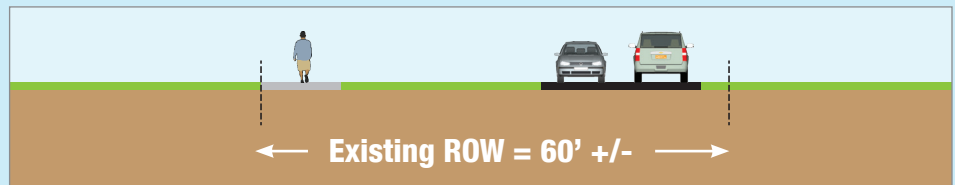
4-lanes with a raised median, 7-foot buffered bicycle lanes, a 12-foot multi use path on one side and a 5-foot sidewalk on the other side. Depending on the outcome of this study, these improvements may need approximately 112 feet to 125 feet



Old Canoe Creek Road to US 192

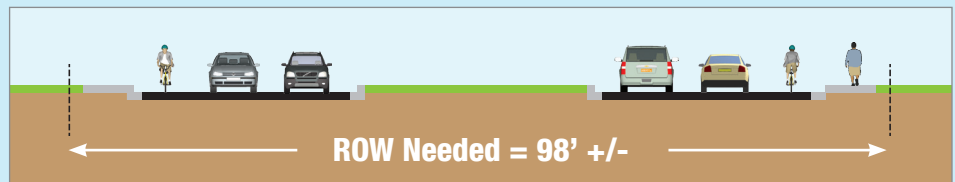
Existing Conditions:

2-lanes with an 8-foot sidewalk on one side. Existing ROW is generally 60-feet



Potential Improvement:

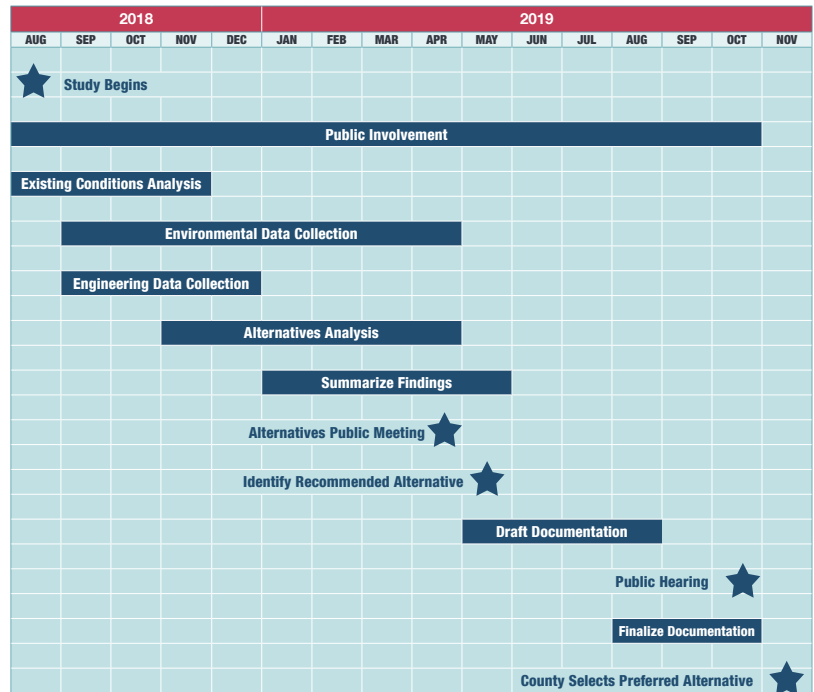
4-lanes with a raised median, 7-foot buffered bicycle lanes, and 5-foot sidewalks. This improvement will need approximately 98-feet of ROW.



ImproveNeptuneRoad.com

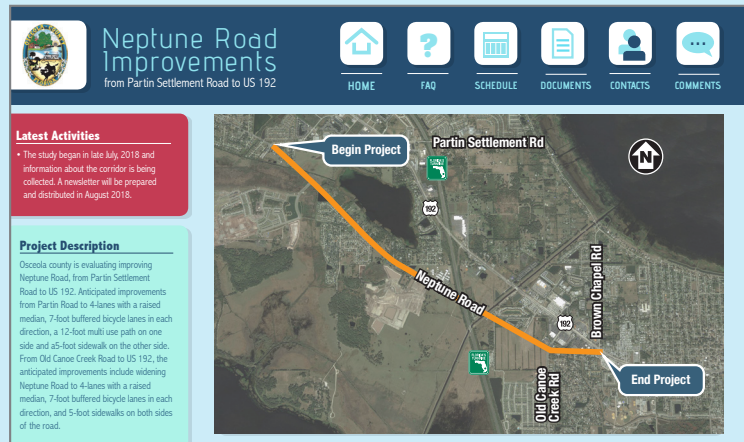
The study began in August 2018 and is expected to take 17 months to complete. While public comments can be provided at any time, key public input will be requested at the Alternatives Meeting (expected to occur in the spring of 2019) and at the Public Hearing (expected to occur in the fall of 2019). Notices for these meetings will be mailed to properties and their owners located within 300-feet of the improvement, as well as people requesting notification as part of our public involvement process.

Comments and requests to be notified of meetings can be communicated through the project website or emails to the project managers below.



Project Website: ImproveNeptuneRoad.com

A project website has been created where you can find out about the latest study activities, see responses to frequently asked questions, see the current study schedule, view and download available project documents, see contact information, or submit comments. This website will be updated throughout the study and will be the best location for obtaining information.



Contact Information

If you have any questions, need more information, or would like for us to speak at your next community group or homeowner's association meeting, please contact us.

Joshua DeVries, AICP
County Project Manager
 Department of Transportation and Transit
 Osceola County Government
 1 Courthouse Square, Suite 3100
 Kissimmee, FL 34741
 Phone: 407-742-7813
 Joshua.DeVries@Osceola.org

Clif Tate, PE
Consultant Project Manager
 Kimley-Horn and Associates, Inc.
 189 S. Orange Ave., Suite 1000
 Orlando, FL 32801
 Phone: 407-898-1511
 Clif.Tate@Kimley-Horn.com