



OSCEOLA COUNTY – LAND USE STUDY COMMUNITY MEETING NOTICE

Dear Residents and Property Owners,

Osceola County has evaluated non-residential and industrial land countywide. As a result, land generally located east of Turnberry Boulevard and along Boggy Creek Road has been identified for an additional study and potential Future Land Use Map designation changes.

Osceola County staff is holding a community meeting to discuss the study and potential opportunities and outcomes for property owners within the study area. Additional meetings will be held and noticed.

Please join us, we need your participation!

OSCEOLA COUNTY LAND USE STUDY COMMUNITY MEETING DETAILS

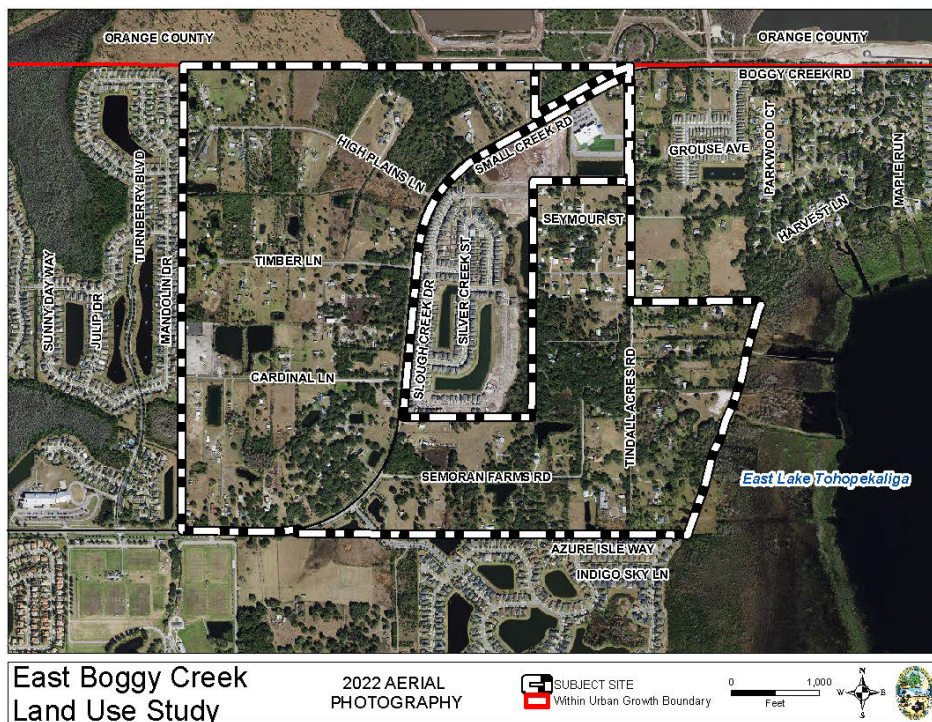
1st Meeting

**February 23rd
6:30pm - 8pm**

Location: **East Lake Elementary School**
4007 Boggy Creek Road
Kissimmee, FL 34744

Contact: **Paul Conover**, Senior Planner
paul.conover@osceola.org

Talbert Jackson, Planner II
talbert.jackson@osceola.org
(407) 742-0294



In accordance with Americans with Disabilities Act, persons with disabilities needing a special accommodation to participate in this meeting should contact the Planning/Zoning Office, 1 Courthouse Square, Suite 1100, Kissimmee, Florida, 34741, telephone (407) 742-0200, not later than five (5) days prior to the meeting.

FAQs

Is development being proposed?

No. The study and outreach are not based on any proposed development.

What is the purpose of this meeting?

The purpose of the meeting is to inform property owners about recommendations of the study and receive input about what potential outcomes could mean.

How does this impact existing development?

Future Land Use Map changes would not affect existing uses unless new development is proposed. New development is defined in the Land Development Code and generally includes construction on vacant land, new subdivisions, and building expansions more than 5%. Development is not being proposed.

How does this impact future new development?

Future new development will have to rezone to a zoning district consistent with any Future Land Use Map changes. A new zoning district will change the permitted uses and performance standards of the property.

How can I participate?

This meeting will be held in a workshop format. Several stations will be set up with county staff available to discuss proposed study scenarios. A website will have periodic updates and summaries of community meetings, as well as information about public hearings as appropriate. For more information, please contact Paul Conover or Talbert Jackson.

OSCEOLA COUNTY LAND USE STUDY COMMUNITY MEETING DETAILS

1st Meeting

**February 23rd
6:30pm - 8pm**

Location: **East Lake Elementary School**
4007 Boggy Creek Road
Kissimmee, FL 34744

Contact: **Paul Conover**, Senior Planner
paul.conover@osceola.org

Talbert Jackson, Planner II
talbert.jackson@osceola.org
(407) 742-0294

The second meeting will be noticed by mail and available on the website.

www.osceola.org/go/boggycreekstudyeast