



Sinclair Road Extension

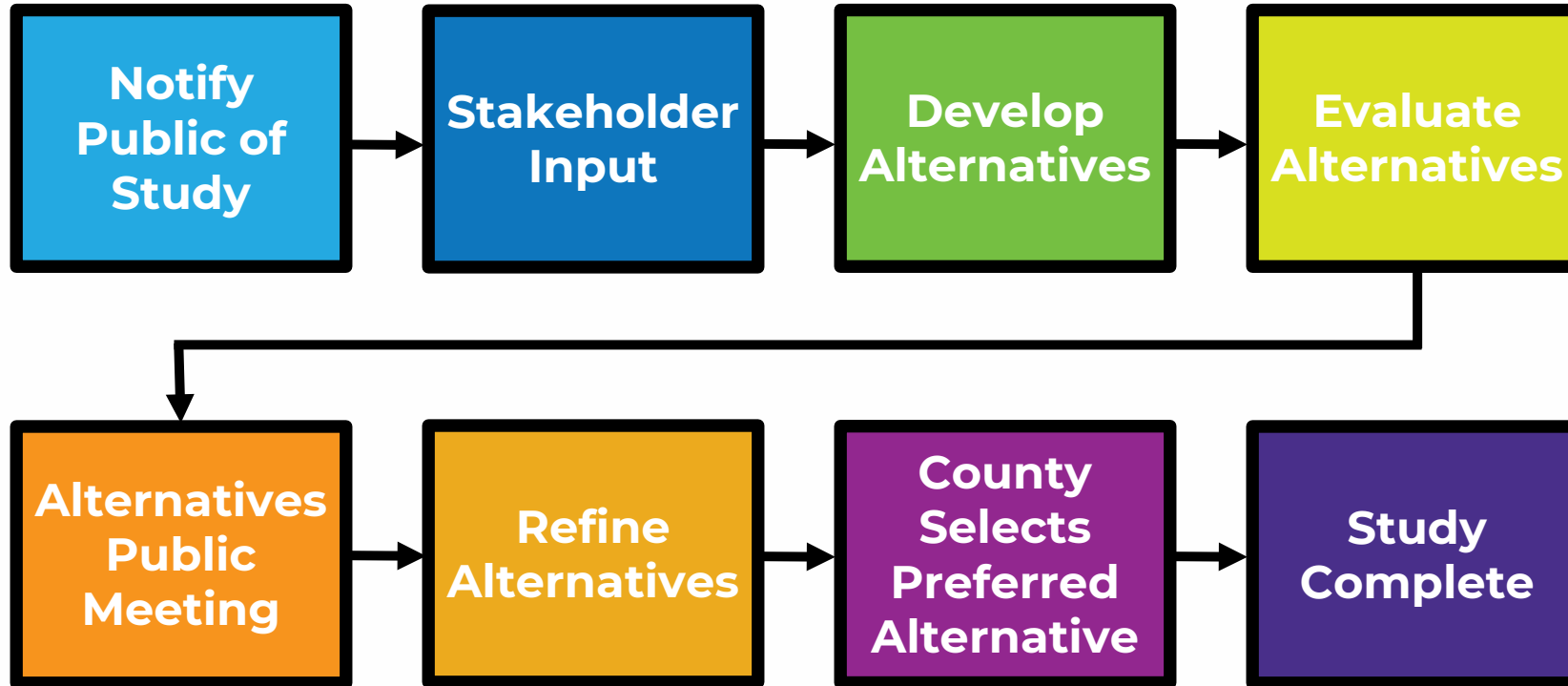
From Tradition Boulevard to Bella Citta Boulevard

Osceola County Board of
County Commissioners

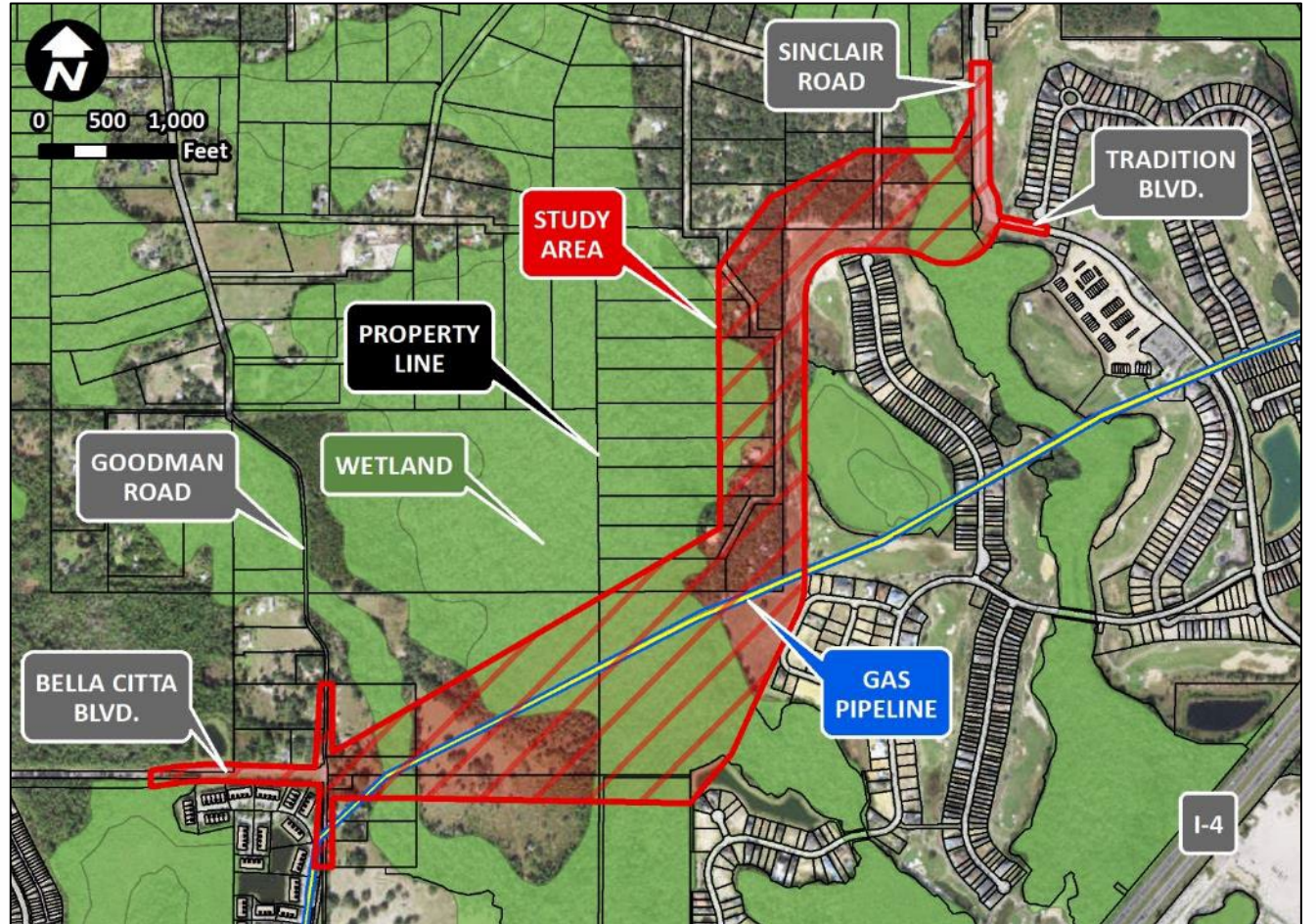
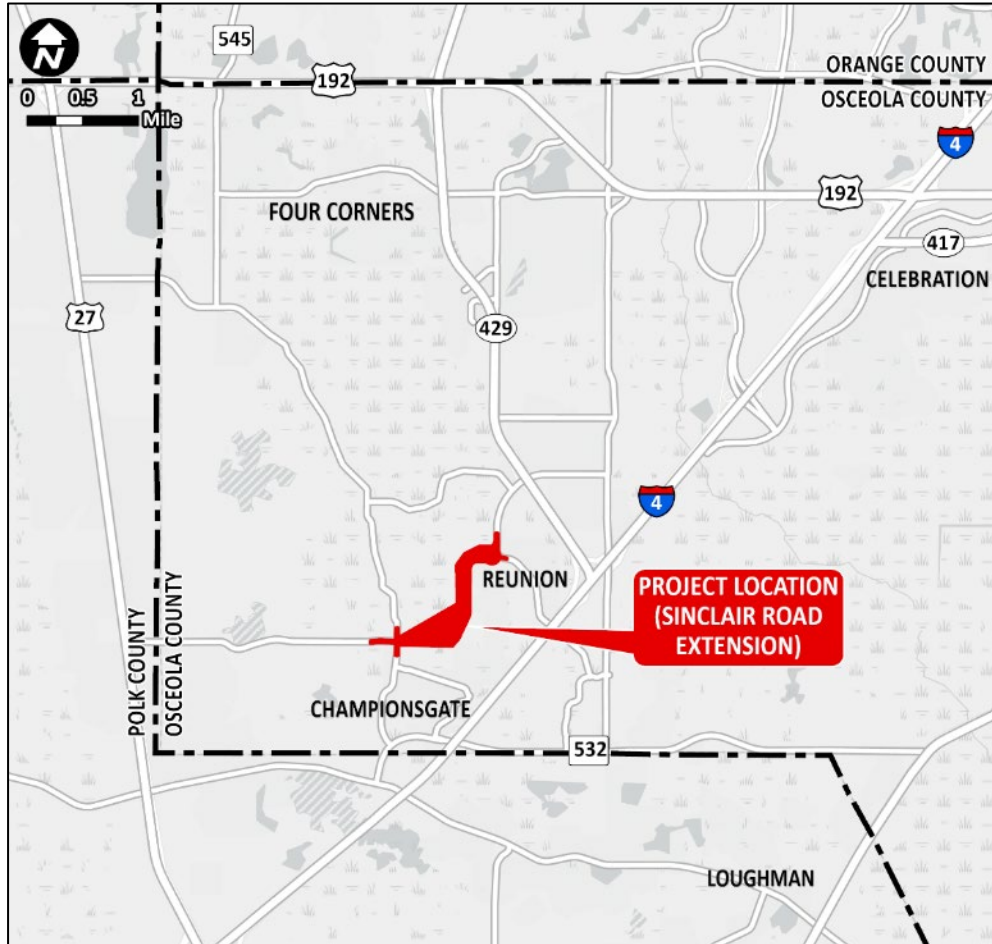
February 20, 2023



PD&E Study Process



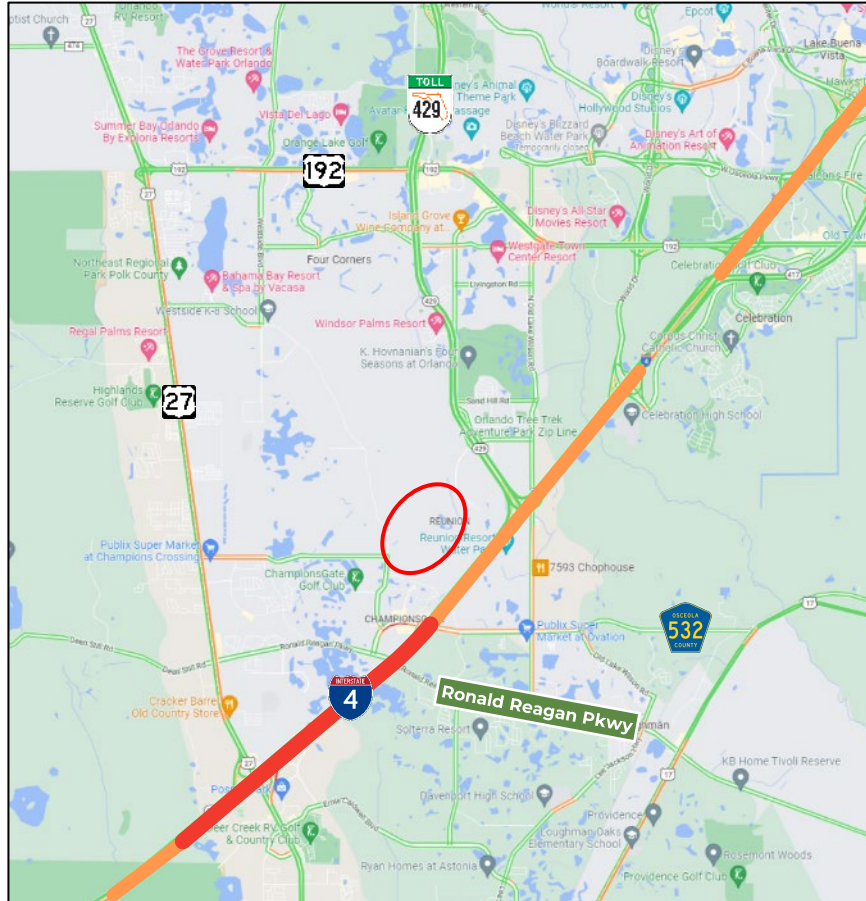
Project Location and Limits



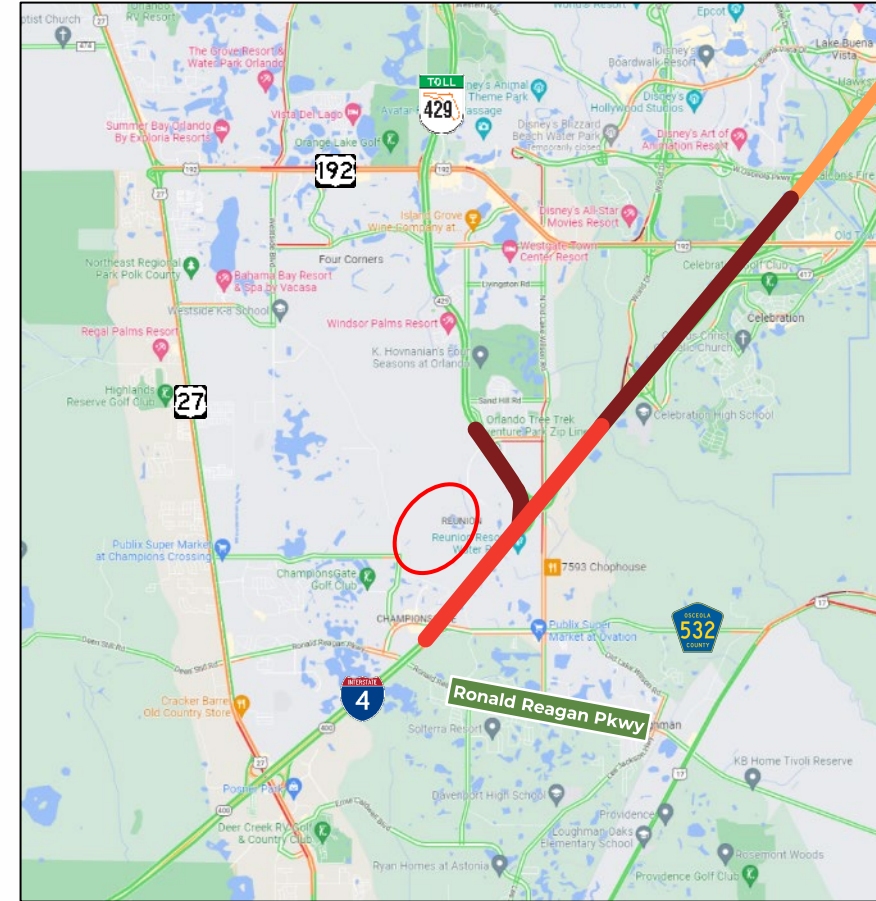


Project Purpose and Need

System Linkage and Mobility



Morning Traffic

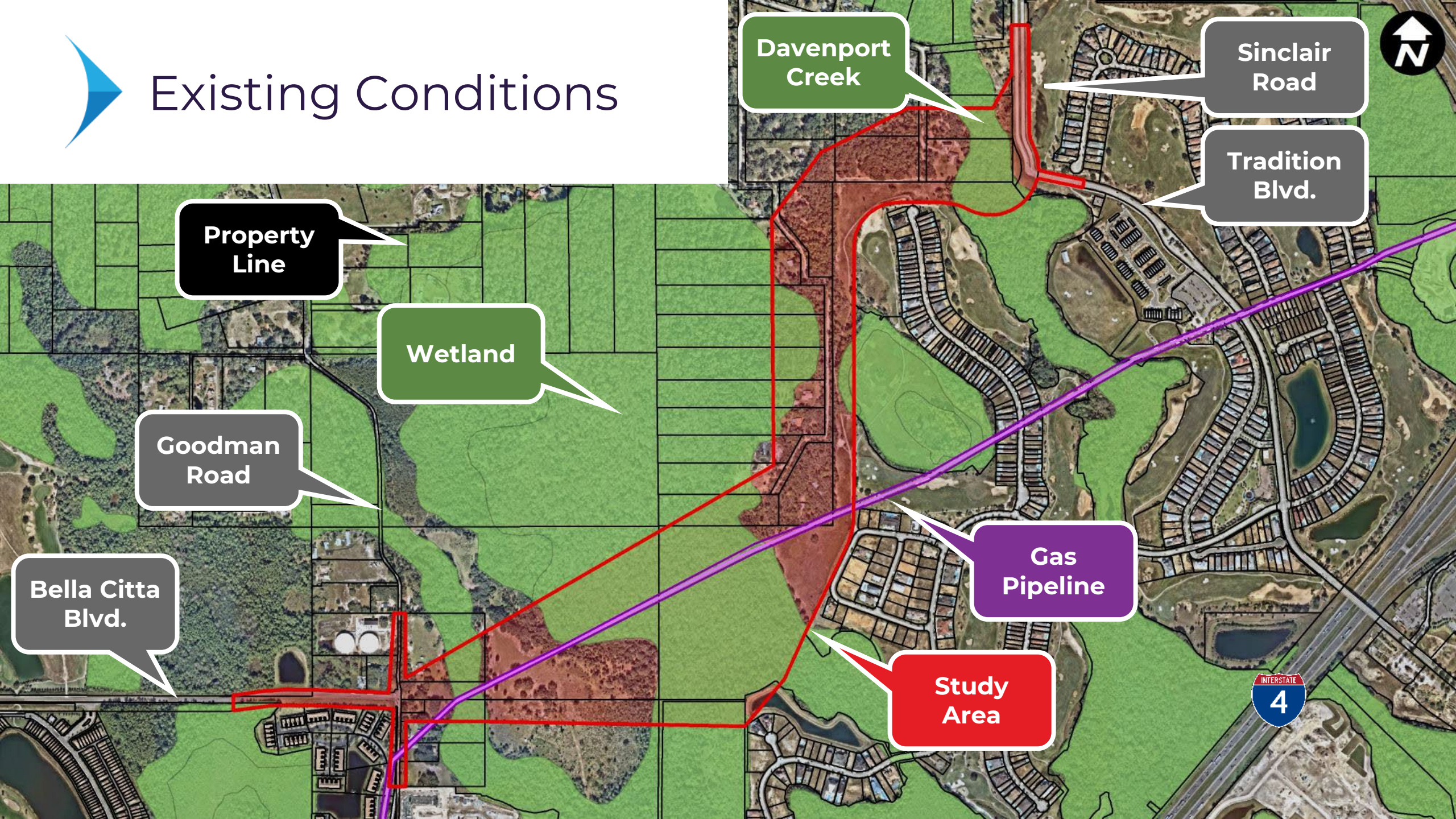


Afternoon Traffic

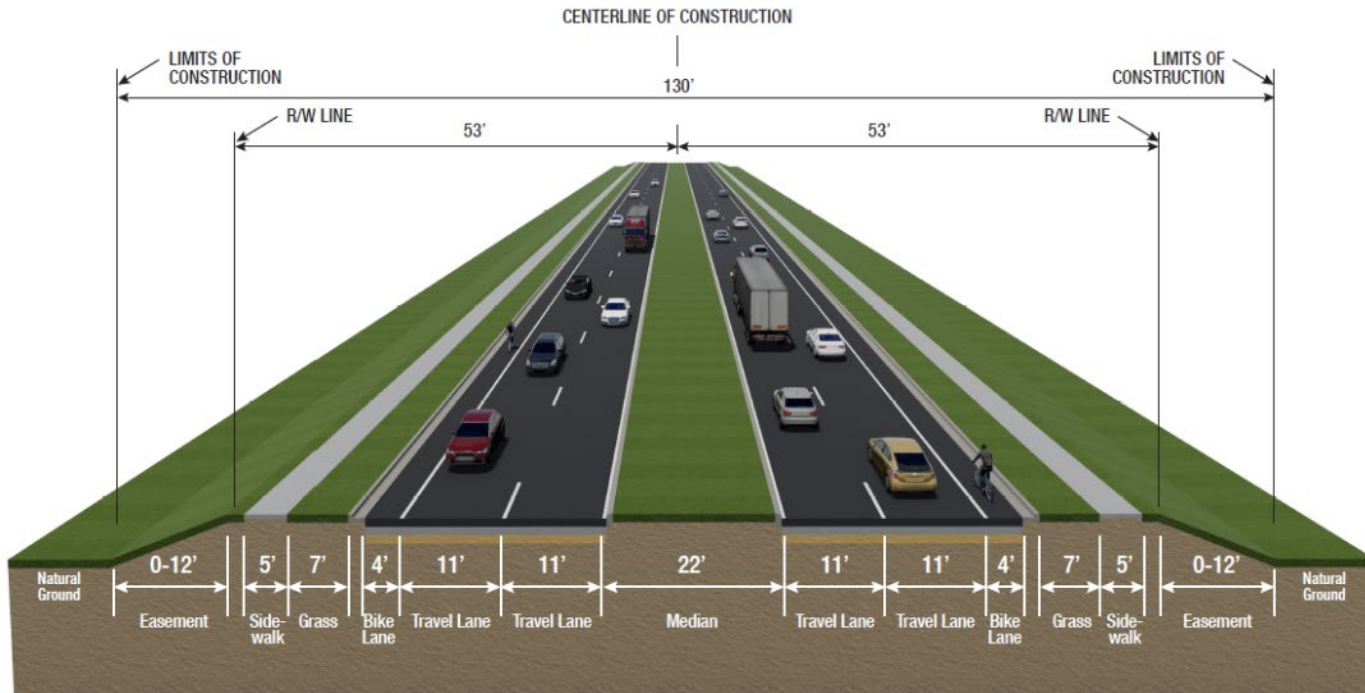
Fast     Slow



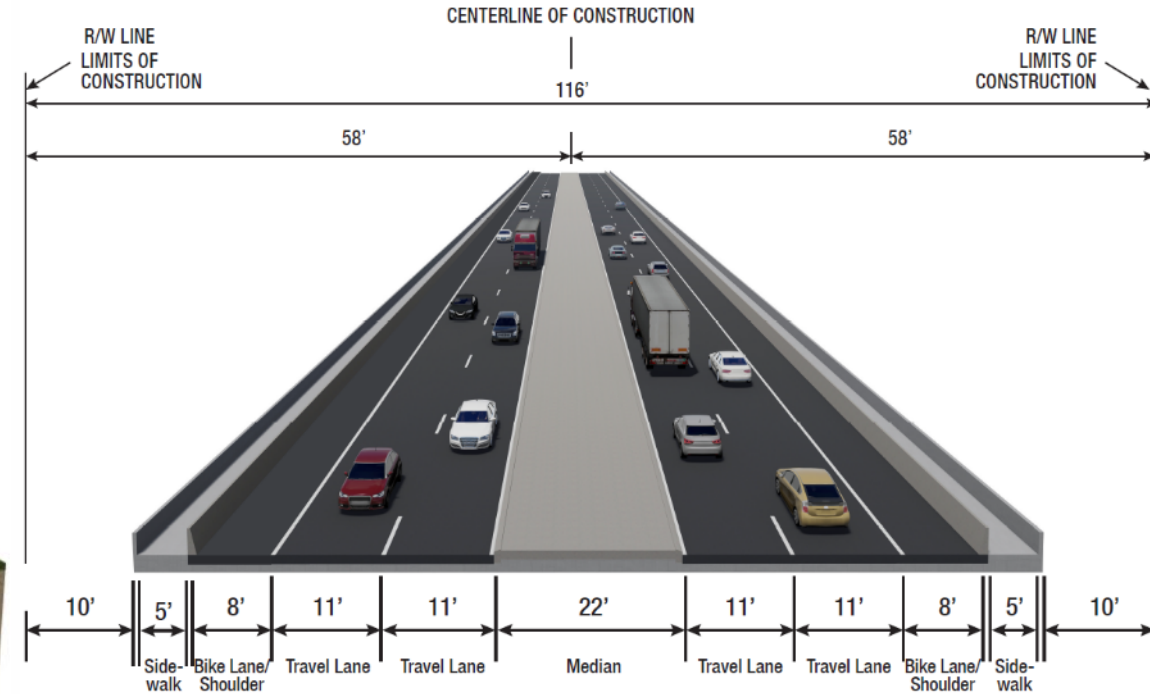
Existing Conditions



Typical Sections



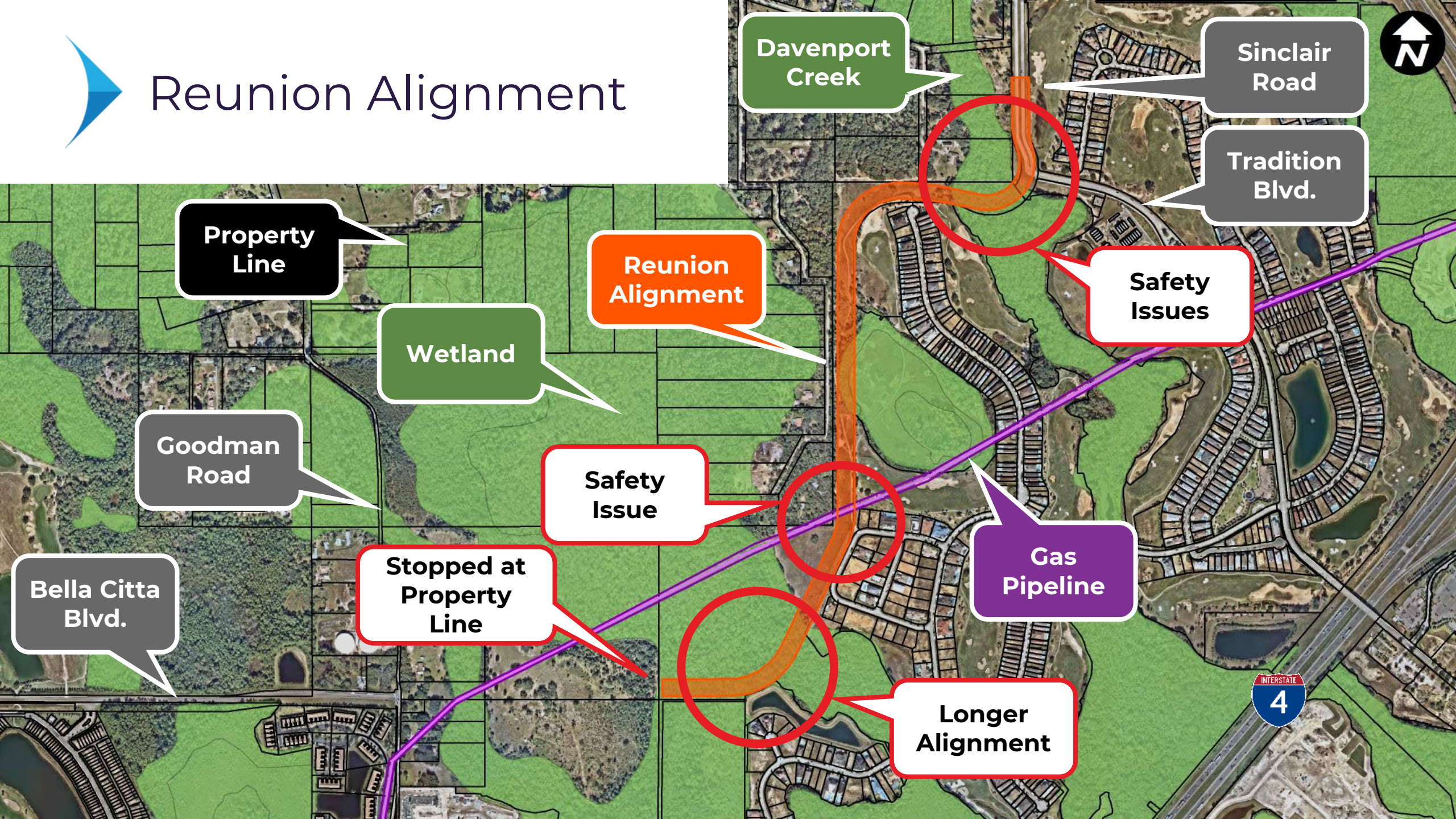
Typical Section – Except on Bridge



Typical Section on Bridge

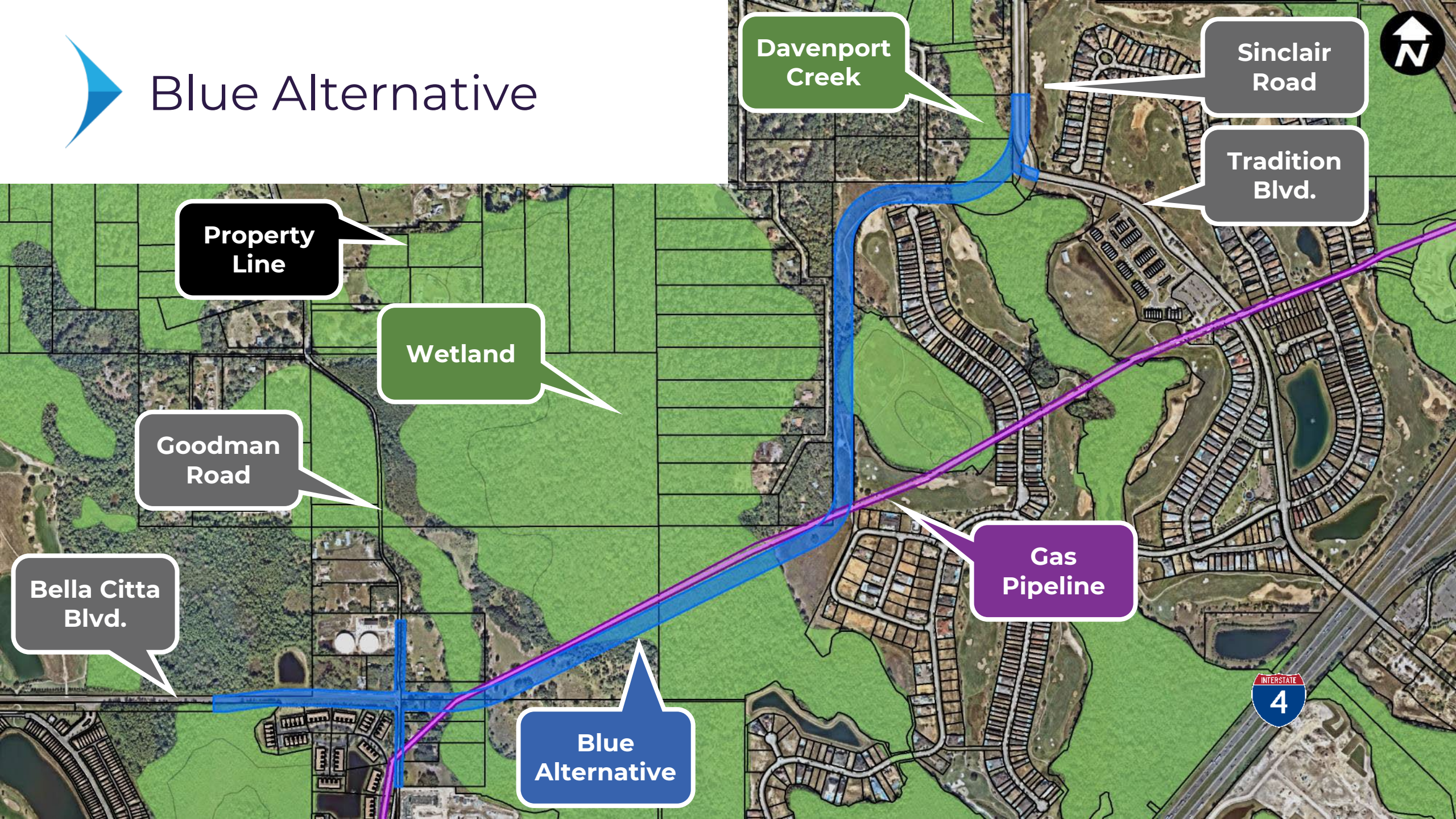


Reunion Alignment



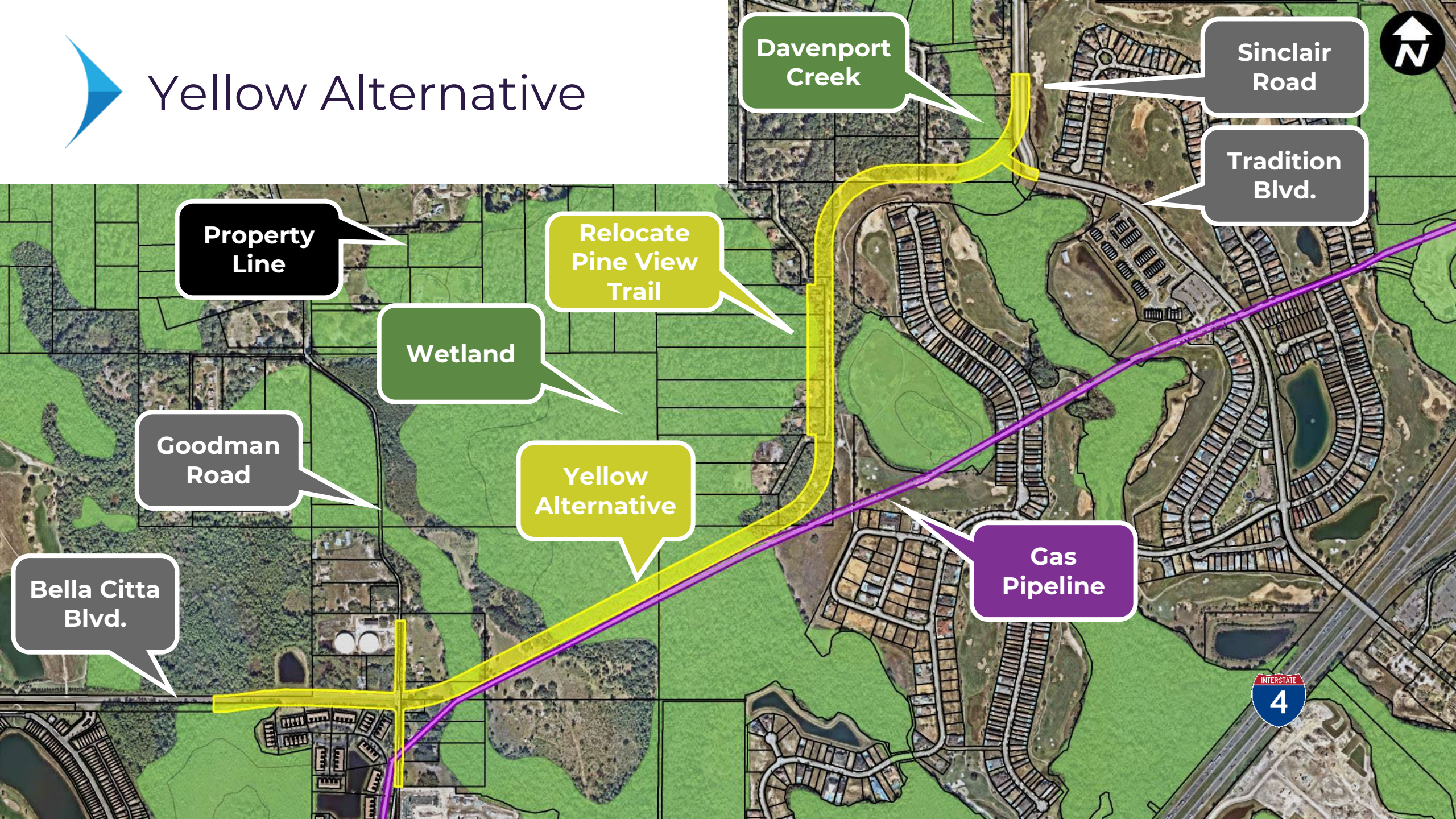


Blue Alternative





Yellow Alternative



Davenport
Creek

Sinclair
Road

Tradition
Blvd.

Property
Line

Relocate
Pine View
Trail

Wetland

Goodman
Road

Yellow
Alternative

Gas
Pipeline

Bella Citta
Blvd.



Yellow Alternative

Relocate Pine View Trail

- To maintain community cohesion
- To maintain private access to the Rural Enclave

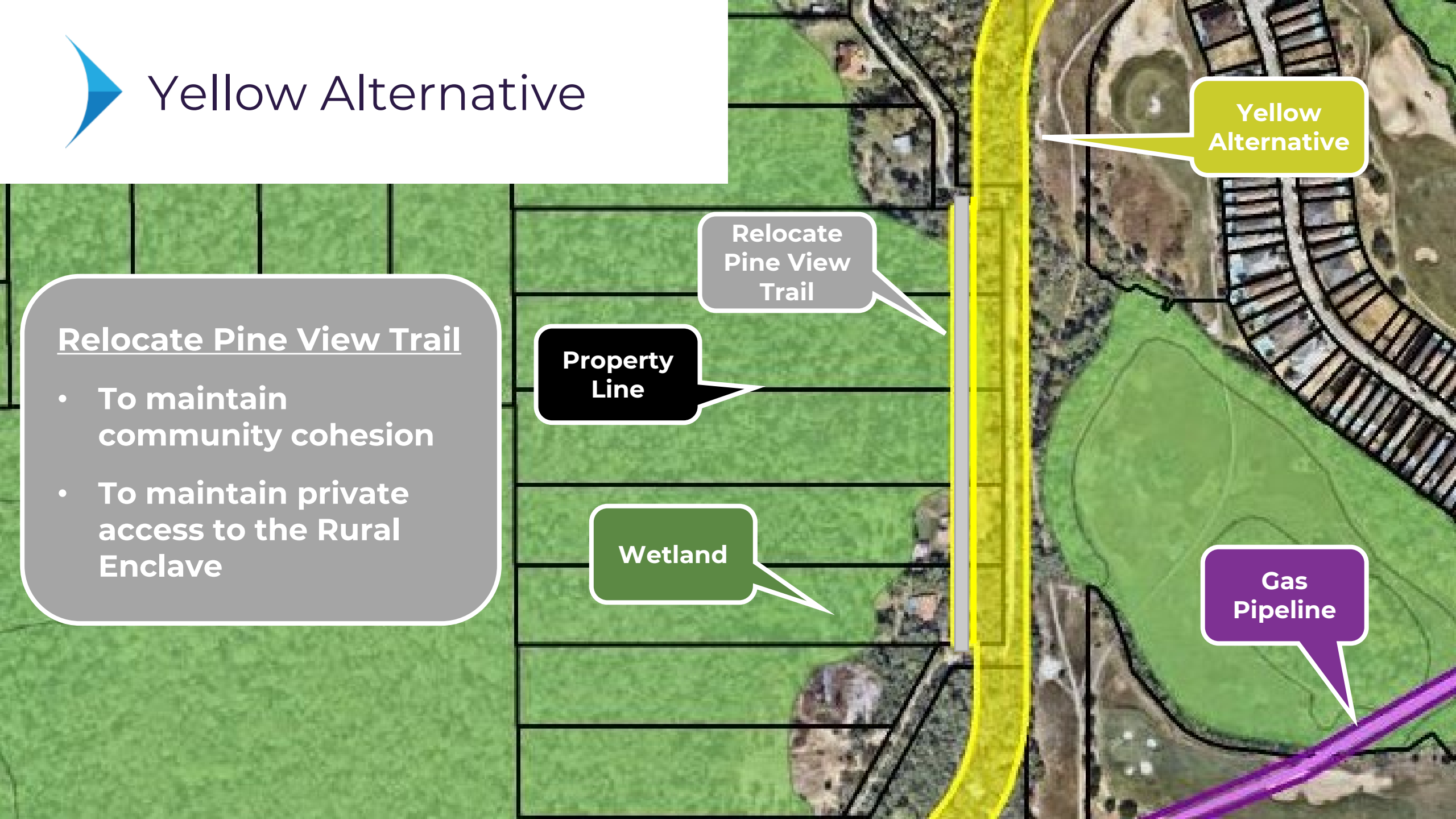
Relocate
Pine View
Trail

Property
Line

Wetland

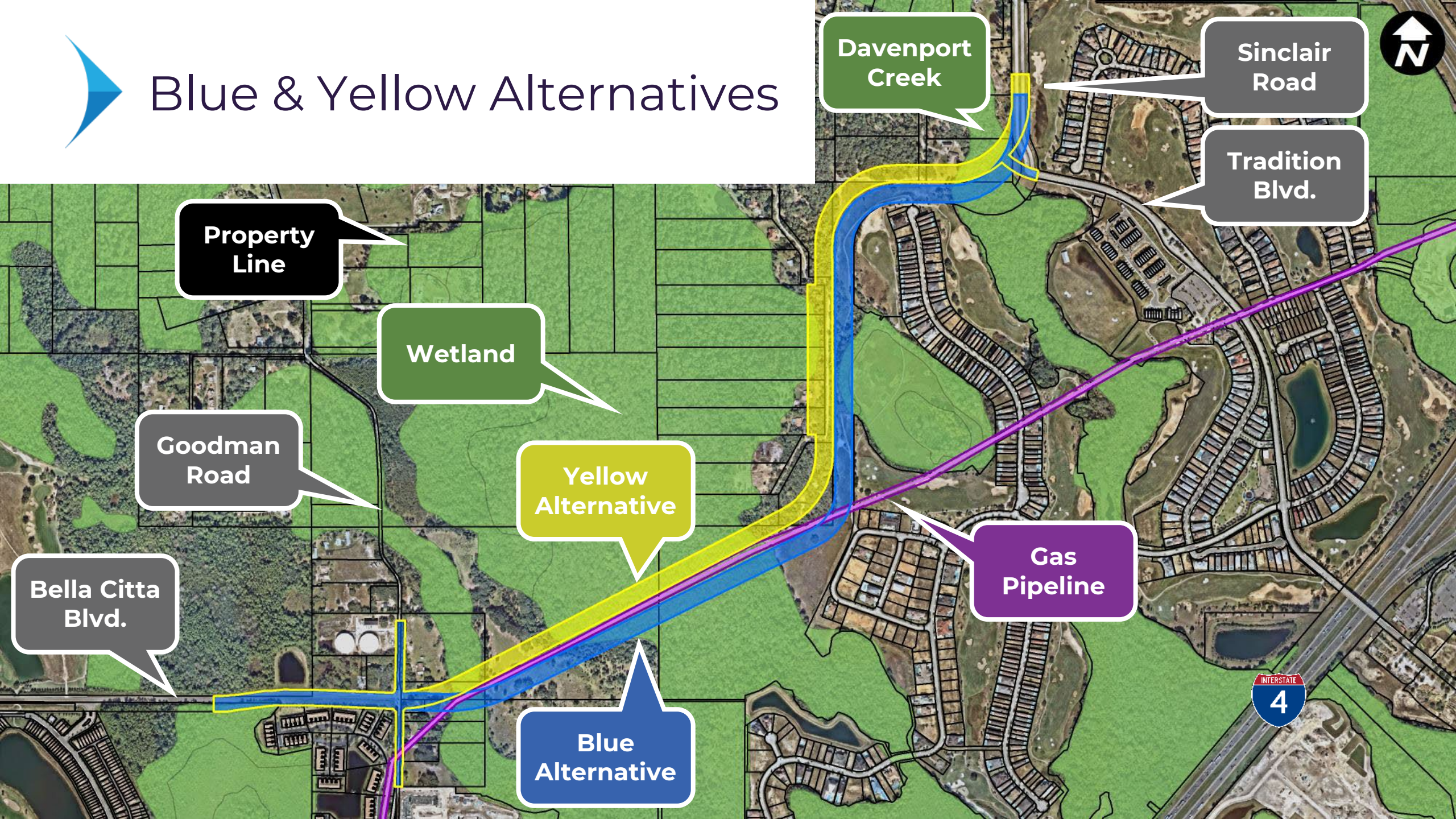
Yellow
Alternative

Gas
Pipeline





Blue & Yellow Alternatives





Evaluation of Alternatives

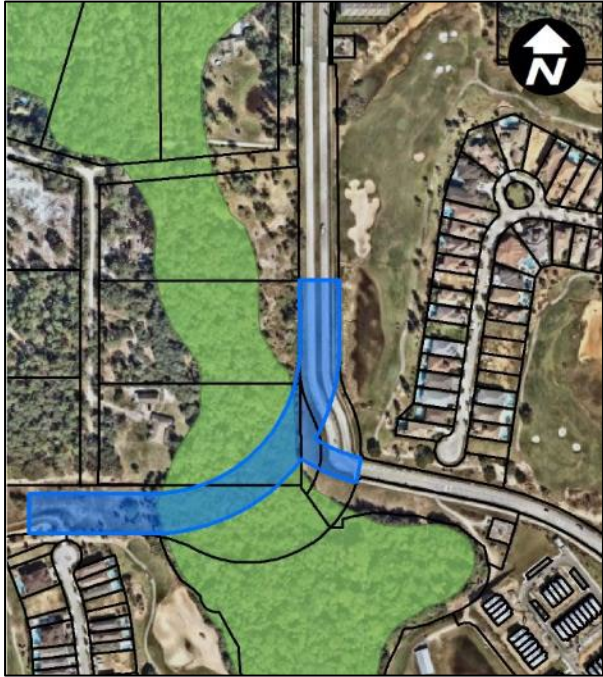
- Both alternatives were evaluated
 - Physical, environmental & social impacts
- Construction Costs
 - Standardized costs for similar projects
- Utility Relocation Costs (Blue Alternative)
 - Gas pipeline relocation costs from Florida Gas Transmission
- Right-of-Way Costs
 - Estimates developed by experts – Pinel & Carpenter, Inc.
 - Parcel-by-parcel assessment
 - Consistent methodology for both alternatives
 - Impacts to Happy Trails parcels (Yellow Alternative)



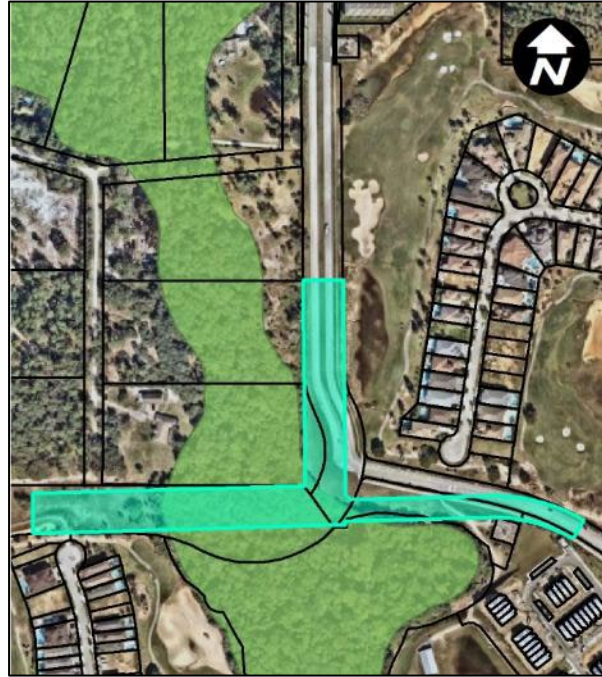
Evaluation of Alternatives

Study Considerations	Alternative		
	No-Build	Blue	Yellow
Meets Purpose and Need	No	Yes	Yes
Residential Parcels Impacted	0	10	17
Existing Development Impacted	0	3	8
Residential Relocations	0	0	3
Wetland & Floodplains Impacts (acres)	0	16.9	17.0
Anticipated Construction Cost	\$ 0	\$ 28.8 M	\$ 29.1 M
Anticipated Right-of-Way Cost	\$ 0	\$ 16.4 M	\$ 20.4 M
Anticipated Utility Adjustment Costs	\$ 0	\$ 4.1 M	\$ 0
Mitigation Costs	\$ 0	\$ 1.0 M	\$ 1.1 M
Anticipated Total Costs (excluding ponds)	\$ 0	\$ 50.3 M	\$ 50.6 M

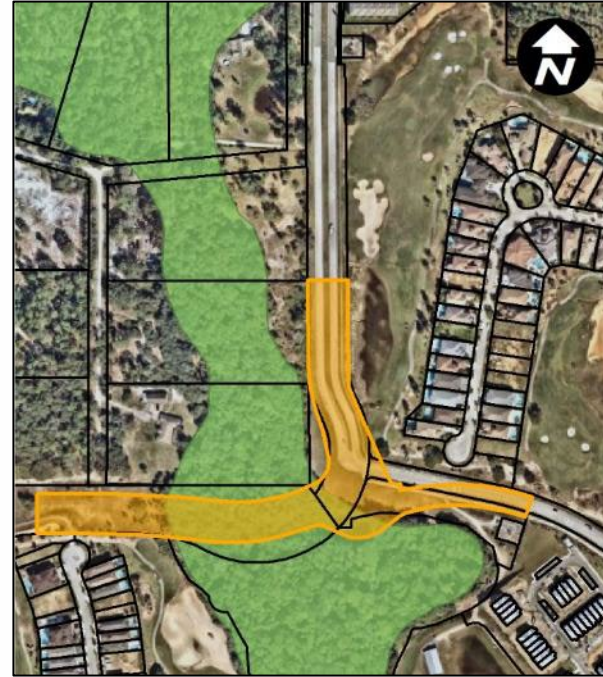
Variations to Blue Alternative



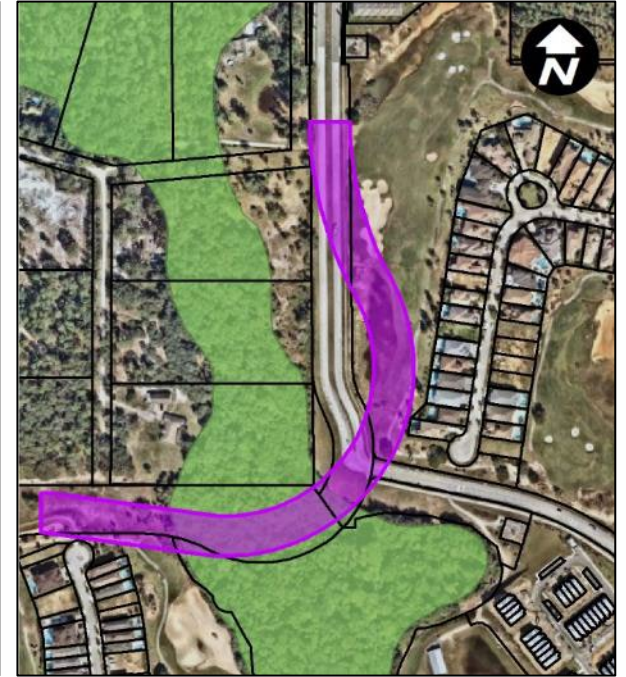
Blue Alternative



Modified "T" Intersection



Roundabout



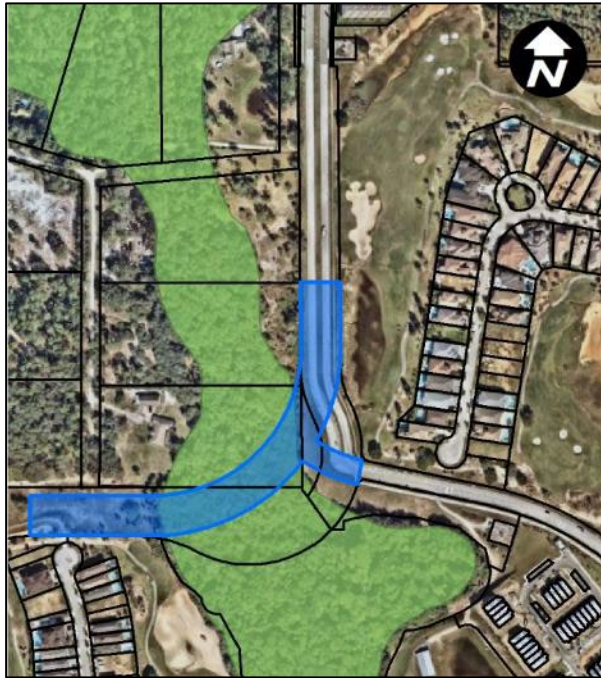
Purple Alignment



Evaluation of Variations to Blue Alternative

Study Considerations	Alternative			
	Blue	Modified T	Roundabout	Purple
Peak Hour Congested (AM and PM)	63% AM 57% PM	85% AM 72% PM	75% AM 98% PM	63% AM 57% PM
Residential Parcels Impacted	2	0	0	0
Non-Residential Parcels Impacted	2	5	6	7
Existing Development Impacted	1	2	3	4
Wetland Impacts (acres)	1.6	1.8	1.9	1.7
Floodplains Impacts (acres)	1.6	2.0	2.1	1.7
Lower Anticipated Construction Cost	✓	✗	✗	✗
Lower Anticipated Right-of-Way Cost	✓	✓	✓	✗

Preferred Intersection



Blue Alternative

- Provides the best traffic operations (along with the Purple Alignment)
- Impacts the fewest parcels
- Impacts the fewest parcels with existing development
- Least environmental impacts
- Lower anticipated construction cost
- Lower anticipated right-of-way costs than the Purple Alignment



August 9, 2022 Public Meeting

- Mailed out 824 notices
- Emailed out 124 notices
- Advertised in newspaper (twice)
- Distributed news release
- Posted on County website and social media accounts
- 117 people signed in/attended
- 92 comments were received





August 9, 2022 Public Meeting Comments

Comments on Alternatives

- 26 Prefer Blue Alternative with adjustments
- 18 Prefer Blue Alternative
- 12 Prefer No-Build Alternative
- 9 Support project, no preference of alternative
- 8 Prefer original alignment in Reunion
- 7 Suggested a different alignment
- 4 Suggested improving other roads
- 2 Prefer Yellow Alternative
- 2 Prefer a roundabout at Goodman Road



August 9, 2022 Public Meeting Comments

Comments on other topics

- 14 Requested additional information
- 11 Concerned about social impacts
- 10 Concerned about wildlife
- 6 Concerned about traffic noise
- 4 Concerned about speed and safety
- 2 Concerned about traffic
- 2 Concerned about drop in property values
- 2 Some Happy Trails parcels will not meet 5-acre requirement
- 1 Concerned about light pollution
- 1 Concerned about environmental impacts
- 1 Suggested providing wider sidewalks



Recommendation

- **Blue Alternative is the Preferred Alternative**
 - With design to consider strategies to reduce impacts
- **Advantages include:**
 - It meets the purpose and need
 - Lower amount of right-of-way
 - Impacts the fewest parcels, both residential and non-residential
 - Requires no residential relocations
 - Does not impact any community facilities
 - Has less total floodplain impacts
 - Has a lower projected cost (which may be reduced further)
 - The preferred alternative based on public input received
 - More similar to the original alignment (which people planned for)
- **Disadvantages include:**
 - Impacts more potential contamination parcels (one parcel more)
 - Impacts more conservation area (1.2 acres more)
 - Impacts more wetlands (0.1 acre more)



Requested Action

- Acceptance of the Preferred Alternative, and approval to move forward into the final design, Right-of-Way, and construction phases for the preferred alternative of the Sinclair Road Extension Study, as funding becomes available.



Sinclair Road Extension

From Tradition Boulevard to Bella Citta Boulevard

Osceola County Board of
County Commissioners

February 20, 2023