



KISSIMMEE – ST. CLOUD CONNECTOR TRAIL

AUGUST 27, 2020, 6pm

Conroy Jacobs

Steve Kreidt



FLORIDA STATUTES AND TITLE VI

Public participation is solicited without regard to race, color, national origin, age, sex, religion, disability or family status. Persons wishing to express their concerns relative to FDOT compliance with title six may do so by contacting:

Maria A. Colon, Director

Human Resources Department

Osceola County Board of County Commissioners

1 Courthouse Square, Suite 4200

Kissimmee, FL 34741

Phone: 407-742-1227

Email: maria.colon@osceola.org

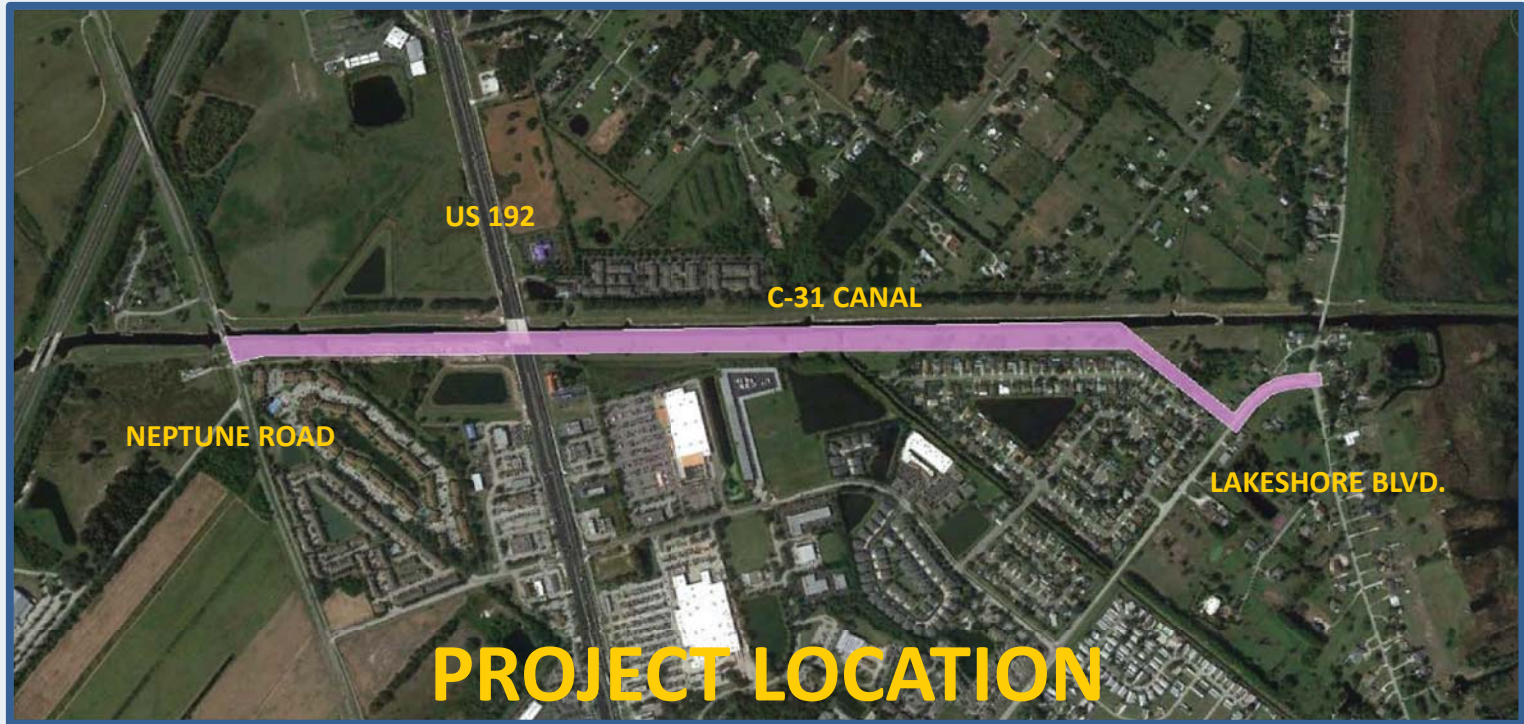


TABLE OF CONTENTS / PRESENTATION OUTLINE

- **PROJECT OVERVIEW**
- **PROJECT FEATURES**
- **PROJECT FUNDING**
- **PROJECT SCHEDULE**
- **PUBLIC INPUT**
- **QUESTIONS & ANSWERS**



PROJECT OVERVIEW



PROJECT AERIAL TOUR/video

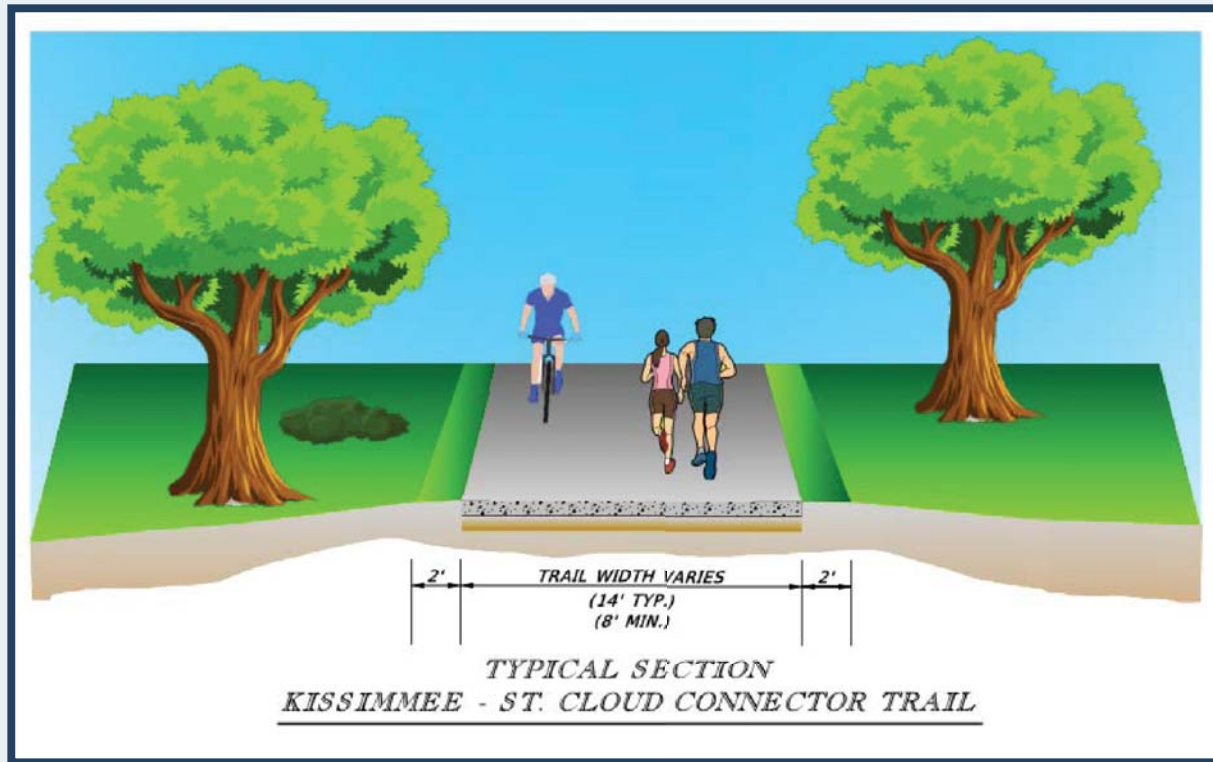


PROJECT PURPOSE

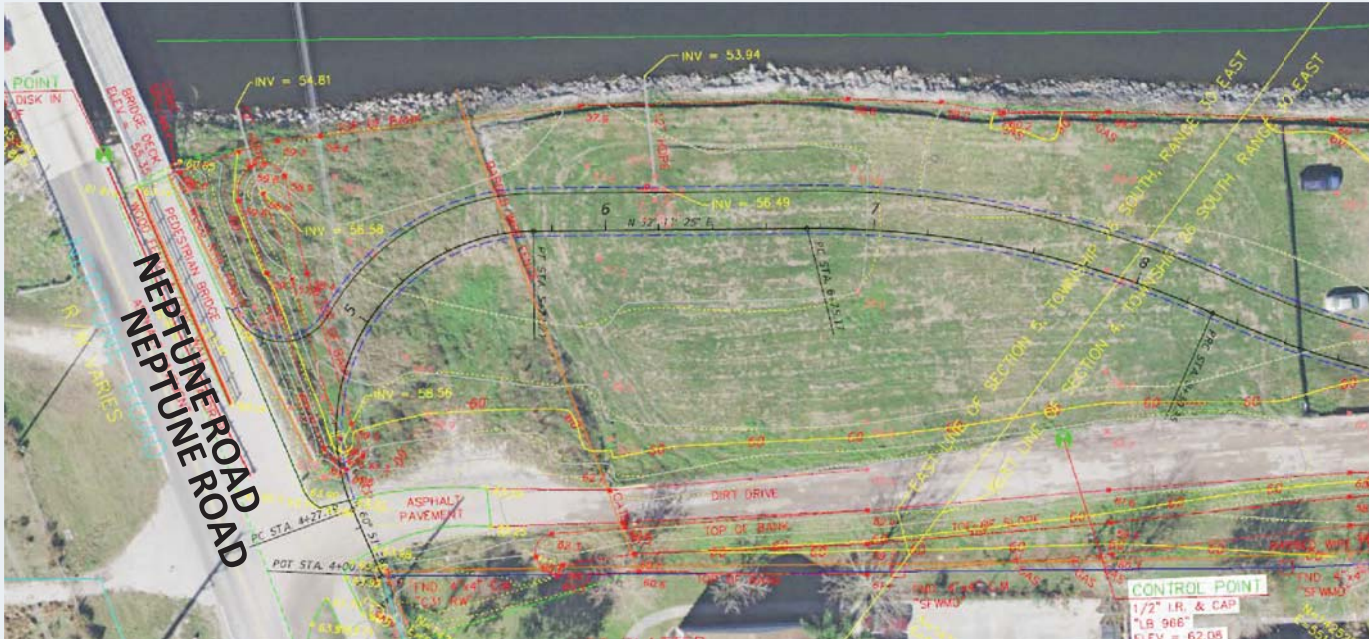
- DESIGN A 1.5 MILE RECREATIONAL TRAIL
- NEPTUNE ROAD TO LAKESHORE BLVD.
- 14 FEET WIDE MULTI-USE PATH WITH ADA ACCESSIBILITY
- ENHANCED PEDESTRIAN CROSSINGS
- BRIDGE UNDER-DECK LIGHTING
- SIGNING & PAVEMENT MARKINGS



PROPOSED TYPICAL SECTION



NEPTUNE ROAD CONNECTION



NEPTUNE ROAD CONNECTION



US 192 BRIDGE UNDERPASS



US 192 BRIDGE UNDERPASS



SUGAR MILL RUINS



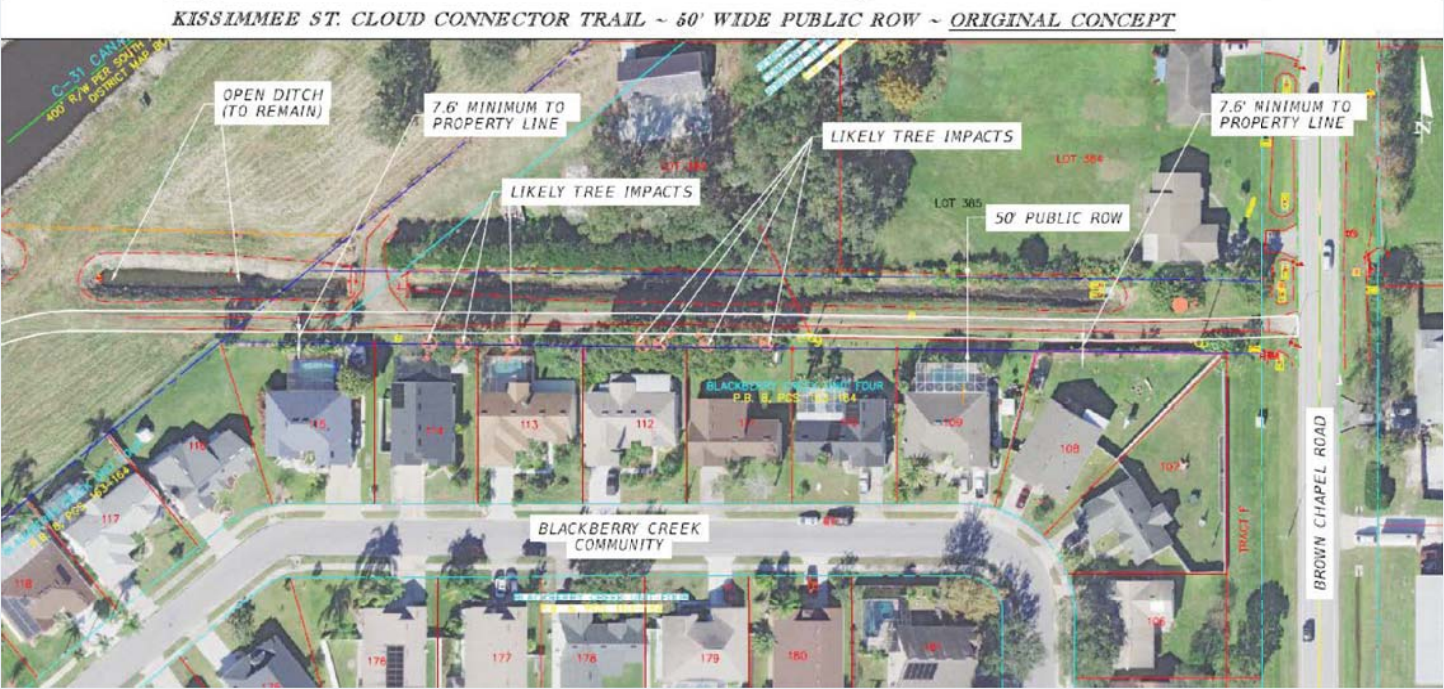
SUGAR MILL RUINS



TRAIL ALIGNMENT OVER CLOSED DITCH NORTH OF BLACKBERRY CREEK



TRAIL ALIGNMENT OVER CLOSED DITCH ORIGINAL CONCEPT



TRAIL ALIGNMENT OVER CLOSED DITCH NORTH OF BLACKBERRY CREEK



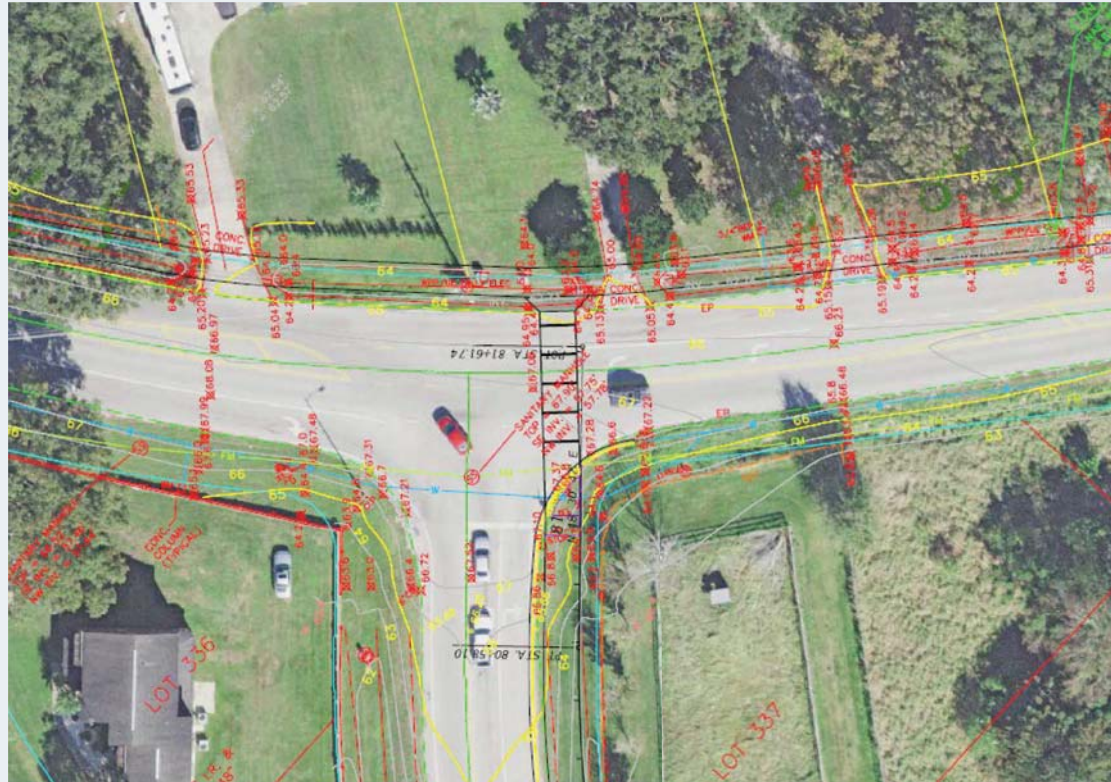
BROWN CHAPEL ROAD ALIGNMENT



BROWN CHAPEL ROAD ALIGNMENT



LAKESHORE BLVD. CROSSING



RIGHT-OF-WAY NEEDS

- **NEPTUNE ROAD (COUNTY)**
- **C-31 CANAL (SFWMD & PRIVATE OWNERSHIP)**
- **US 192 (FDOT)**
- **EAST-WEST CONNECTION TO BROWN CHAPEL ROAD (COUNTY)**
- **BROWN CHAPEL ROAD (CITY)**
- **LAKESHORE BOULEVARD (CITY)**
- **ROW ACQUISITION IS NEEDED**



PROJECT FUNDING

- **FEDERALLY FUNDED PROJECT**
- **FUNDS ADMINISTERED BY FDOT THRU THE LOCAL AGENCY PROGRAM (LAP)**
- **FEDERAL FUNDS BUDGETED FOR DESIGN (\$326,000)**
- **RIGHT OF WAY ACQUISITION WILL BE FUNDED LOCALLY**
- **BUDGETED CONSTRUCTION FUNDING FOR FY 22/23 (\$3.4 million)**



PROJECT SCHEDULE

**DESIGN BEGAN
JANUARY 2020**

**DESIGN COMPLETE
DECEMBER 2020**

**CONSTRUCTION
BEGINS SUMMER
2022**



PUBLIC INPUT



- **YOUR INPUT IS IMPORTANT!**
- **IDEAS TO ENHANCE THE TRAIL**
- **CONCERNS / PROBLEMS**
- **PROJECT DEVELOPMENT**

www.osceola.org/go/KissimmeeStCloudTrail





QUESTION & ANSWER SESSION





THANK YOU!

CONTACT INFORMATION

CONROY JACOBS, AICP, MPA

Project Manager

Transportation & Transit Dept.

Osceola County Board of County Commissioners

1 Courthouse Square, Suite 3100

Kissimmee, FL 34741

Phone: 407-742-0557

Conroy.Jacobs@osceola.org

STEVEN M. KREIDT, PE

Project Manager

KCG Engineering

1700 North Orange Avenue, Suite 400

Orlando, FL 32804

Phone: 407-898-7858 (ext. 199)

SMKreidt@kcgcorp.com

